



EF System

Recessed Modular Linear Lighting & Utilities System

One system.
Countless possibilities.

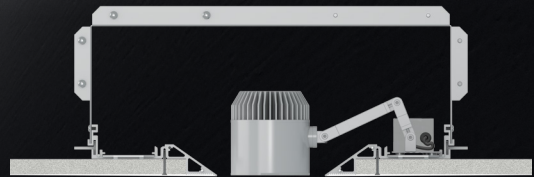




The EF System

Recessed Modular Linear Lighting

The EF System enables designers and specifiers to drastically clean up the ceiling plane by incorporating multiple types of architectural LED lighting into one recessed system. The system can be used for linear slots, cove lighting, accent lighting, perimeter lighting and more.

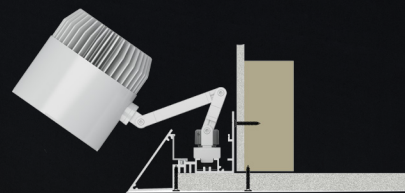


EF400

pages 4 - 29

Recessed Modular Lighting and Utility System

EF400 gathers all necessary components of an architectural ceiling into one clean continuous slot. Along with LF's state-of-the-art adjustable and linear lighting modules, the EF400 channel can host utility equipment such as HVAC, surveillance, public address, WIFI, fire sprinklers, and more. EF400 includes modular housing units with a magnetic strip for variable placement of lighting. Also available are housing units with fixed position double gimbal lamp holders and a simple mounting rail for use with EF408 light units without the need for a housing.



EF200

pages 30 - 47

Recessed Cove Lighting System and Mill-work Replacement

The EF200 System is much more than just a recessed linear cove system. Starting with our extruded aluminum channel, with its knife-like trimless edge, the EF200 may be installed to build out a linear cove along the perimeter of a room, along the edge of a free-floating portion of a ceiling, or two channels may be installed facing each other in order to form a recessed slot in the ceiling. EF200 includes two mounting channel types: one for mounting adjustable light units alone, and a double slotted version for adding linear LED uplighting.

More than just a recessed linear slot system

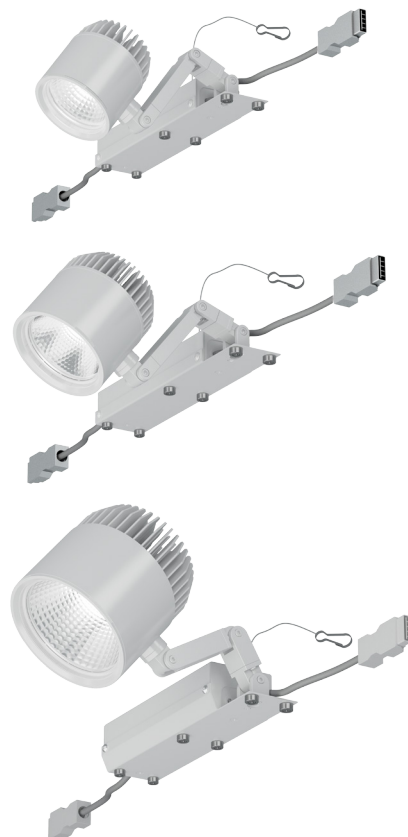


EF400 System

Combining lighting and commonly used ceiling utility systems into one clean recessed slot has become the holy grail of architectural lighting design for retail and high-end applications.

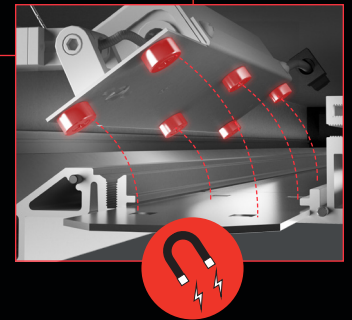
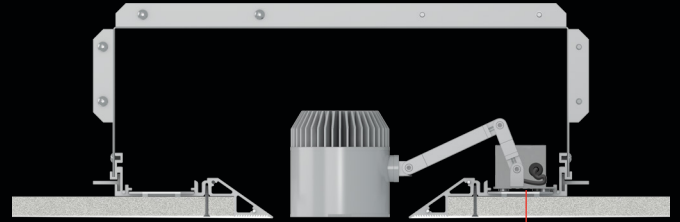
EF400 combines a rugged all aluminum linear extrusion, a steel recessed housing, and state-of-the-art adjustable and fixed lighting components. This alone would make the system a highly valuable addition to any lighting design project. With the added ability to include other ceiling elements such as sprinklers, surveillance, HVAC, WIFI, and public address systems, EF400 becomes essential to clean ceiling design.

EF400 offers fully adjustable accent light head units which are movable to any location in the housing. The channel may also accommodate moveable linear LED units. EF400 also offers a line of channel modules with fixed fixture placement. Standard 1', 2', 4', & 8' straight channel runs with 90° return modules achieve any number of recessed slot lighting configurations.



EF400 System

The EF400 System housing offers a “Zero Edge” opening for an exceptionally clean trimless installation while providing added room to adjust the light units. The lighting equipment may be mounted on either side of the housing using our exclusive magnetic mounting system.



EF400 uses our exclusive magnetic mounting system for lighting. Fixtures may be placed and moved anywhere along the length of the channel.



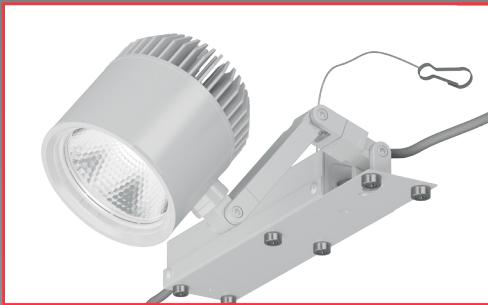
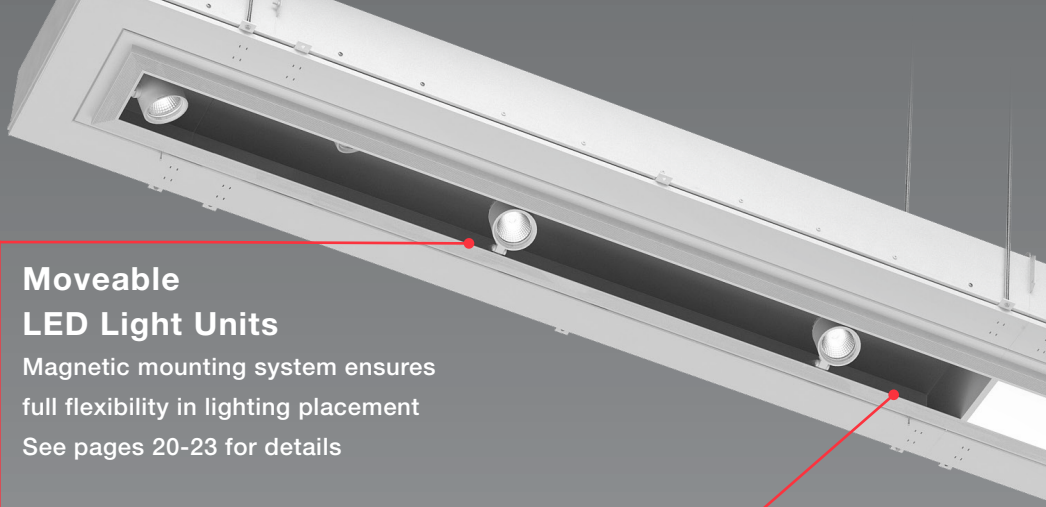
TOPSHOP

EF400 is featured throughout the Top Shop Flagship store in NYC.

Lighting design by Lighting Design Alliance



EF400



Moveable LED Light Units

Magnetic mounting system ensures full flexibility in lighting placement
See pages 20-23 for details



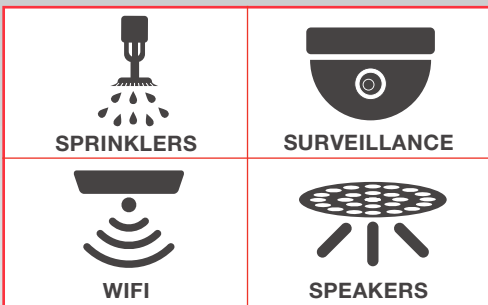
Modular Channel

Channels are available in four fixed lengths or may be ordered in custom lengths



HVAC Feed

Special blank housing modules may be ordered for use with HVAC diffusers.

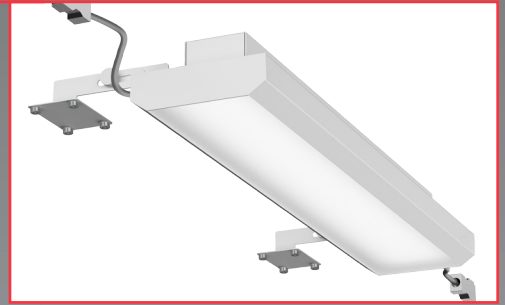


Ceiling Utility Integration

EF400 can accommodate most types of ceiling utility elements for seamless inclusion into one clean recessed slot.

Linear LED Modules

Linear LED modules are available for general illumination tasks. LED units are moveable. See pages 24-25 for details.

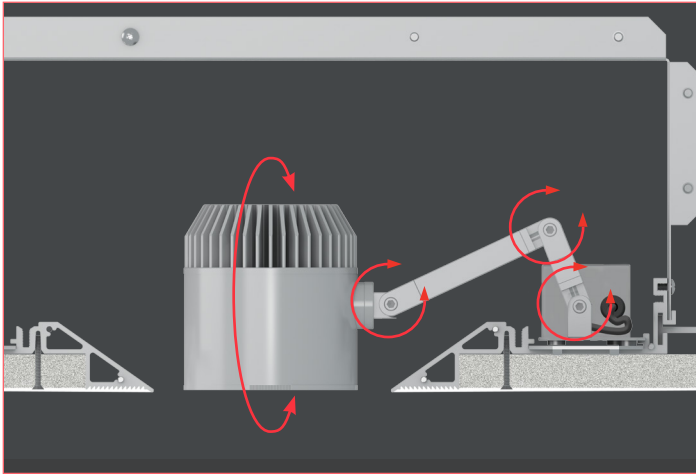


Corner Return Modules

90° elbow and “tee” modules are available for long continuous installations.

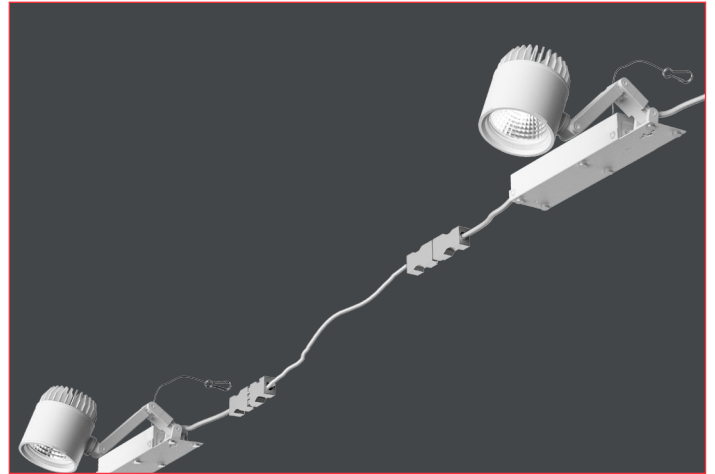


EF400



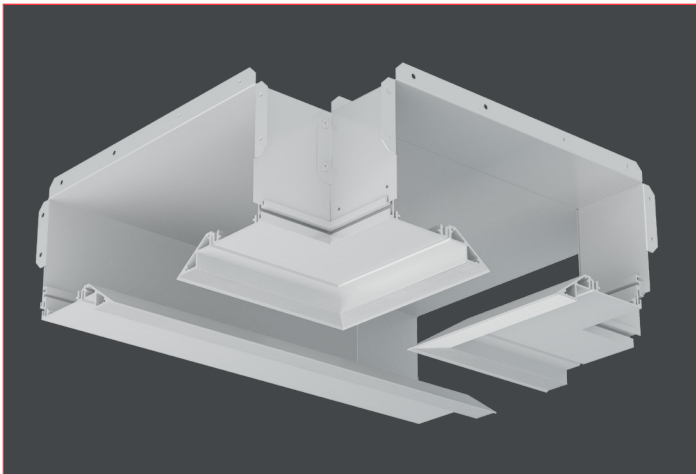
Four Points of Articulation

EF400 adjustable spotlight fixtures are quite versatile. The articulating arm has four points of swiveling adjustment. From hidden, extreme angles to straight downlight to below-ceiling pulldown, the possibilities are endless.



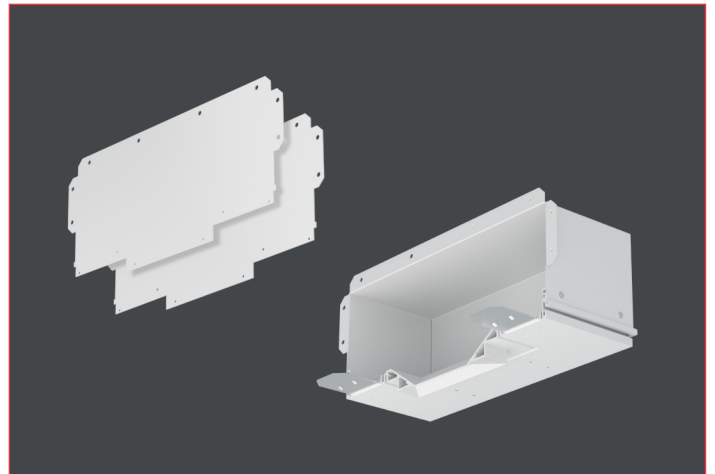
Jumper Cables

For close spacing, fixtures may be simply connected to each other. Jumper cables are available for stringing multiple lighting units together for longer increments along the length of the housing.



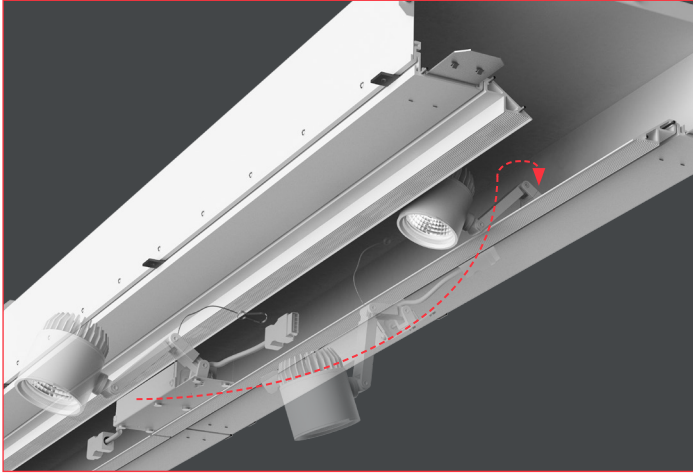
Corner Connectors

Both "L" (elbow) and "T" type corner modules are available to add to the versatility of EF400. See page 26 for details.



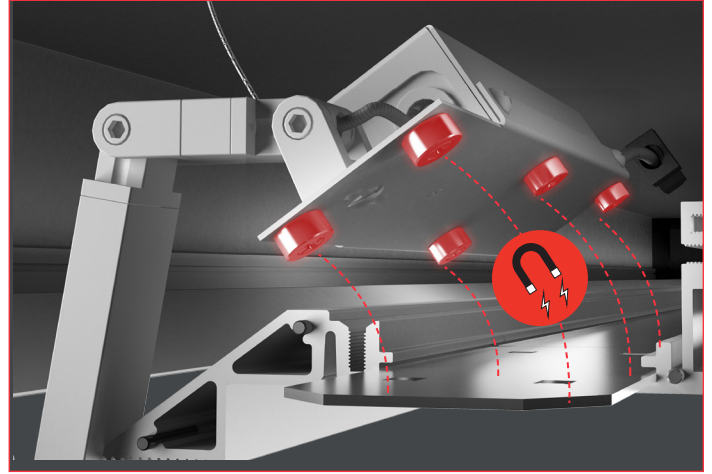
End Caps

End caps for the EF400 housing come in two types. A simple flat end cap for terminating a run and a "horseshoe" end cap that enables the knife-like opening to extend onto the end while allowing the mounting of a fixture on the perpendicular section of the end cap. See page 26 for details.



Moveable Light Units

Light units may be placed and replaced anywhere in the housing at any time. Both sides of the housing are available for light unit placement, enabling any number of lighting applications from dense spacing to long intervals.



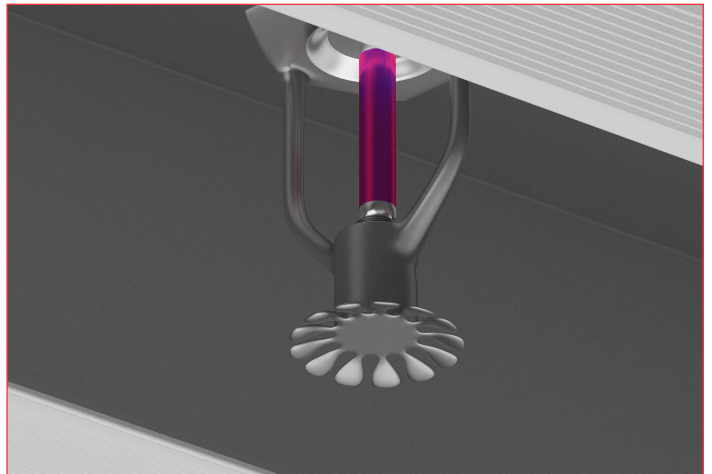
Magnetic Mounting

Our exclusive magnetic mounting system for lighting equipment is a true breakthrough in lighting design versatility. No longer is the lighting placement final after initial aiming. As the environment evolves, so too can the lighting. Safety cables are mounted to each fixture for an added level of security.



Modular Channel Sections

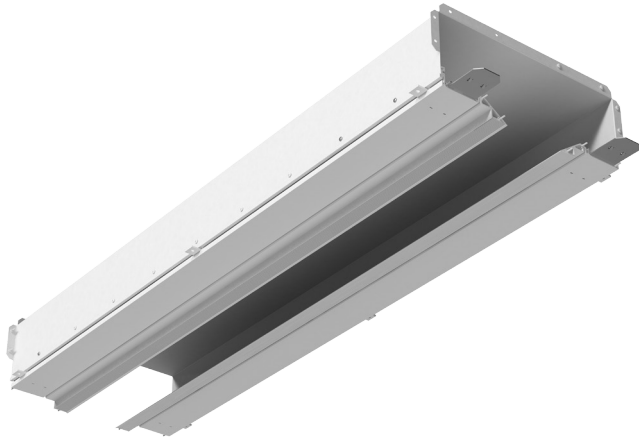
Section of EF400 are easily mounted together with included hardware to extend the slot as long as is required. Standard 1', 2', 4', and 8' sections are available. Consult the LF factory for custom lengths.



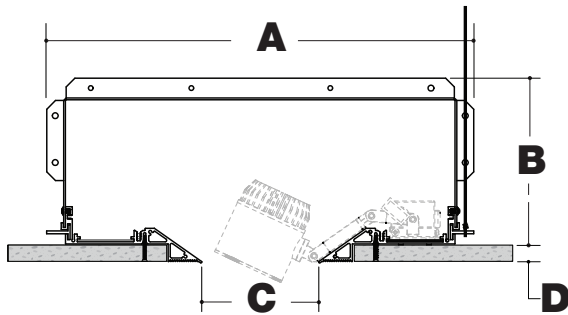
Utility Integration

Combining lighting with the other elements of the ceiling into one clean linear installation is now a standard practice in modern lighting design. EF400 accommodates any number of commonly used utility elements seamlessly into the housing. See pages 16-17 for details.

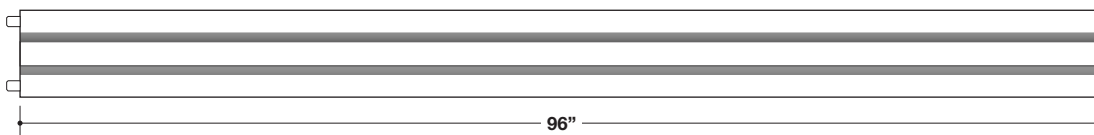
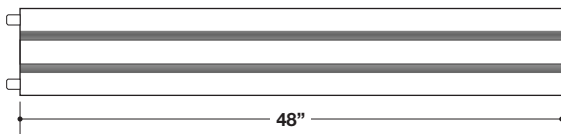
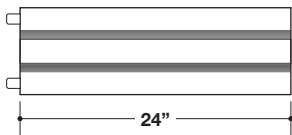
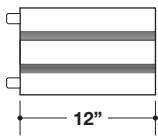
EF400 System Lighting Channel



EF4 Lighting Channel



Channel Size	A	B	C	D
B (4")	17.24"	6.08"	4.00"	0.75"
C (5")	18.24"	6.08"	5.00"	0.75"
D (6")	19.24"	9.08"	6.00"	0.75"



Straight Channel

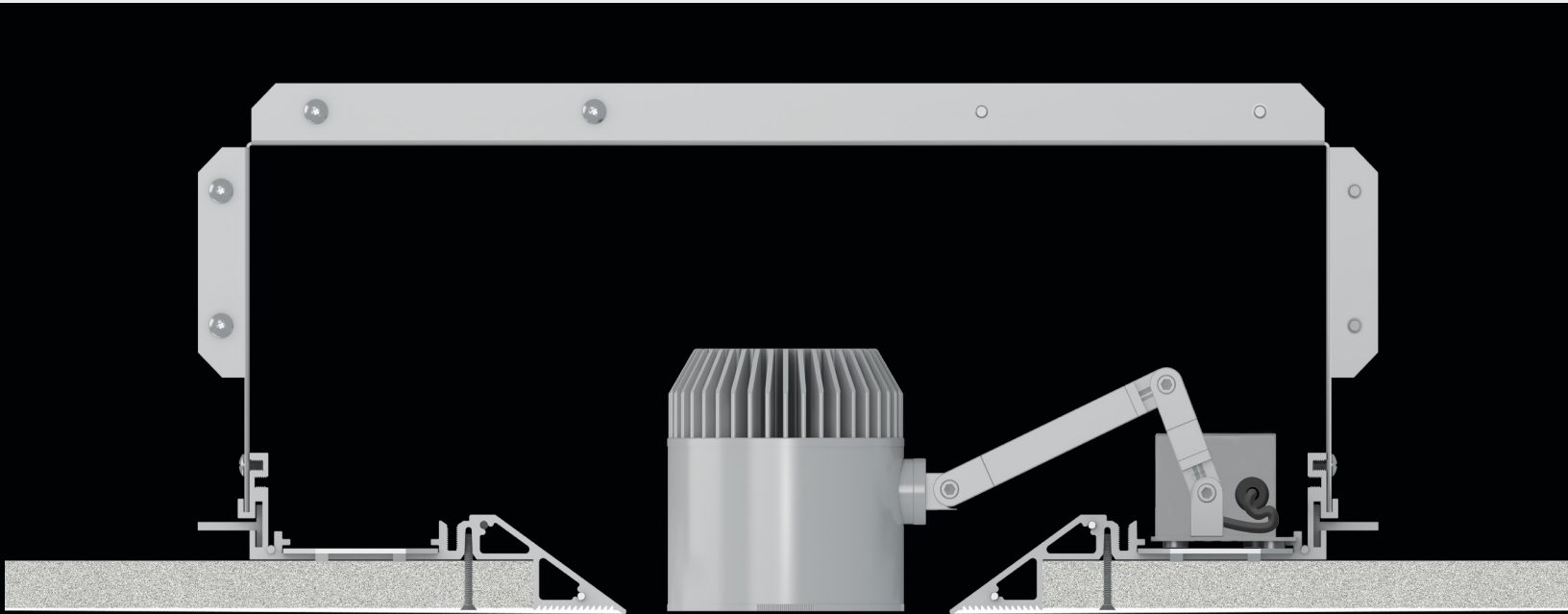
Cat #	EF4	EF400 lighting trough section
Size	B C D	4" slot aperture 5" slot aperture 6" slot aperture
Housing	N	New construction
Ceiling	S	Trimless Drywall
Length	012 024 048 096 XXX	12" section 24" section 48" section 96" section Custom length (May be ordered in whole inch dimensions) Sections longer than 96" will be configured and shipped in 96" sections or shorter.
Finish	BB WW XX	Black powder coat White powder coat Custom finish
Example # EF4-B-N-S-048-WW		

Features

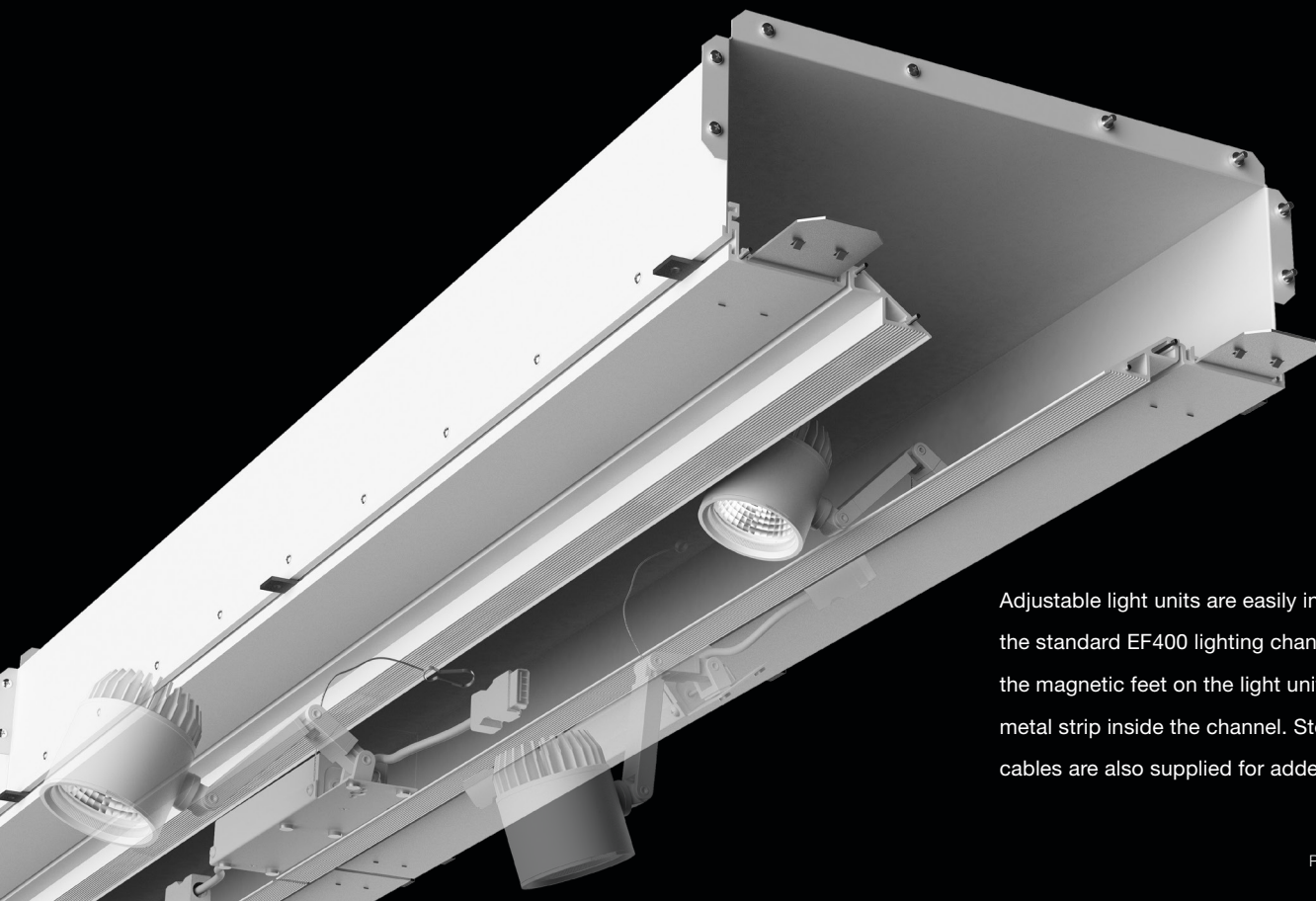
- Extruded aluminum aperture
- Trimless drywall or solid ceiling options
- Metal housing
- Single sections may be combined for continuous runs
- Magnetic light unit mounting
- Variable position tie-down tabs for cable or threaded rod suspension
- Accent light units see pages 20-23
- Linear LED light units see page 24-25



EF400 System Lighting Channel

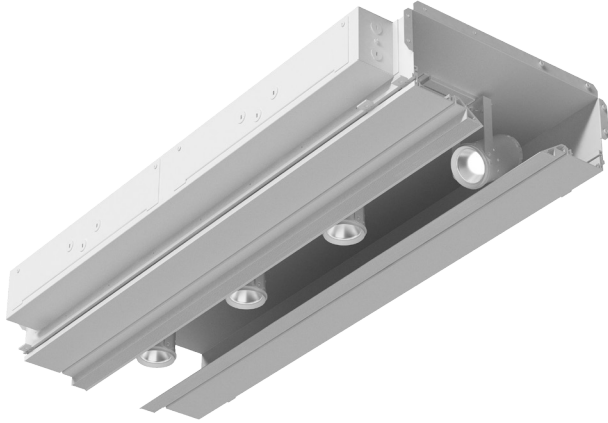


The standard EF400 lighting channel is the most versatile. It can house any combination of adjustable accent light units, linear LED light units, and most ceiling utility elements. The channel sections are totally modular and can be connected together to meet the needs of any lighting application.



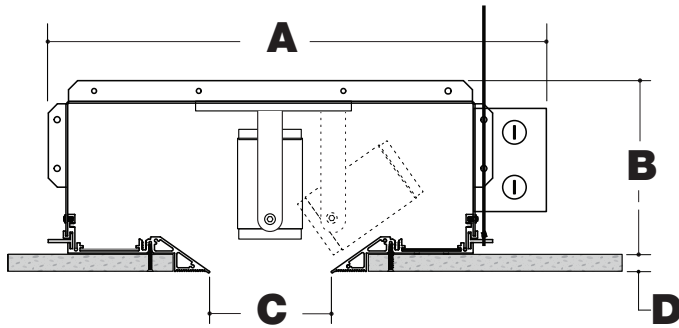
Adjustable light units are easily installed into the standard EF400 lighting channel due to the magnetic feet on the light unit and the metal strip inside the channel. Steel safety cables are also supplied for added security.

EF400 System Multiples Channel

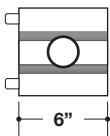


EF4

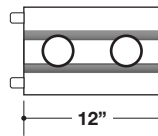
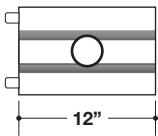
Multiples Lighting Channel



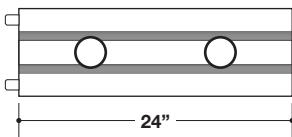
Channel Size	A	B	C	D
B (4")	19.55"	6.08"	4.00"	0.75"
C (5")	20.55"	6.08"	5.00"	0.75"
D (6")	21.55"	9.08"	6.00"	0.75"



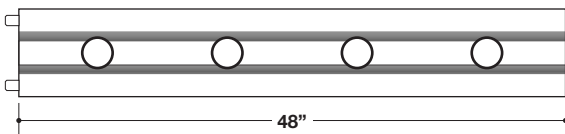
6" o/c Spacing



12" o/c Spacing



12" o/c Spacing



Multiples Channel

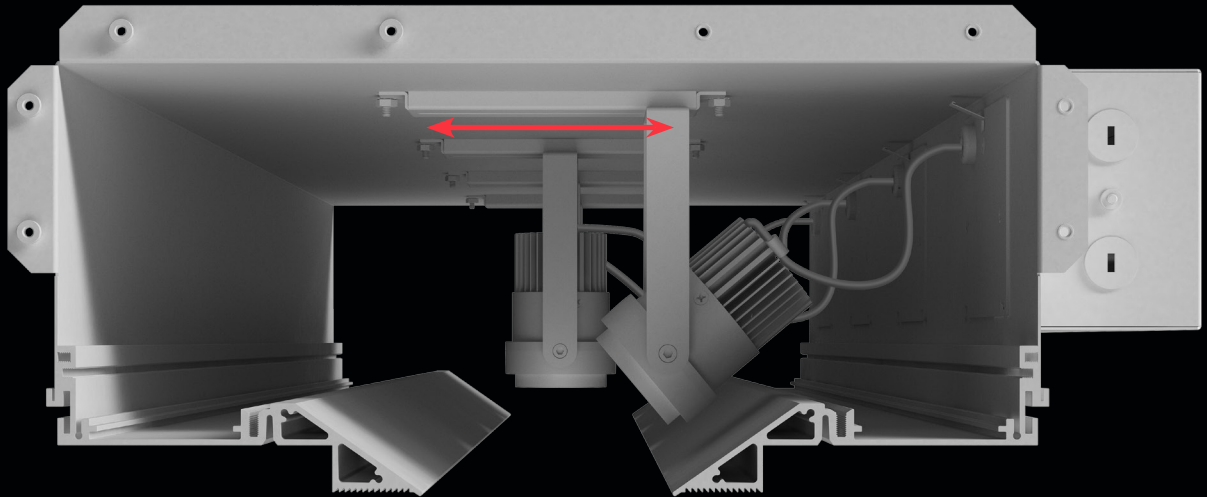
Cat #	EF4	EF400 lighting trough section with fixed position lamp holders
Size	B C D	4" slot aperture 5" slot aperture 6" slot aperture
Housing	N	New construction
Ceiling	S	Trimless Drywall For other ceiling types, consult the factory
Config	106 112 212 224 448	1lt 6" 1lt 12" 2lt 12" 2lt 24" 4lt 48"
Source & Power Supply	See next page for overview of available sources and power supplies. Consult web site / spec sheets for ordering details.	
Finish	BB WW XX	Black powder coat White powder coat Custom finish
Example # EF4-B-N-S-0448-7W-8030-M-D1-1-WW		

Features

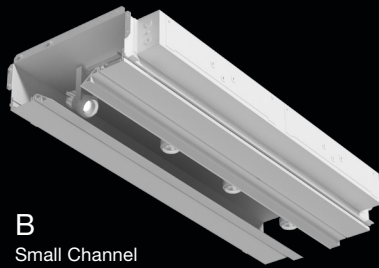
- Extruded aluminum aperture
- Trimless drywall or solid ceiling options
- Metal housing
- Single sections may be combined for continuous runs
- Fixed position top-mounted fixtures
- Integral wiring box with through-wiring capability
- LED Fixtures with field replaceable optics
- 40° x 40° tilt x 360° rotational adjustment
- Integral power supplies
- Variable position tie-down tabs for cable or threaded rod suspension



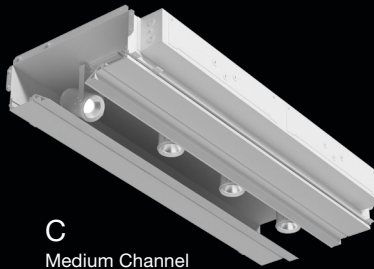
EF400 System Multiples Channel



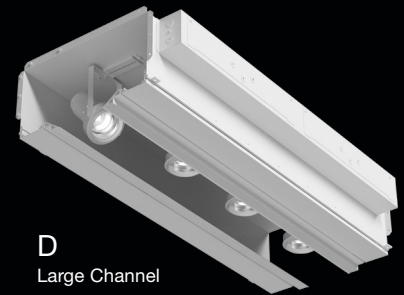
With the multiples housing, light units are permanently mounted to an adjustable mechanism at the top of the housing at fixed spacing. The lamp holders may be adjusted horizontally for added versatility.



B
Small Channel
4" Slot



C
Medium Channel
5" Slot



D
Large Channel
6" Slot

Available Sources

07W (700lm nom Cree®)
09W (900lm nom Cree®)
14W (1200lm nom Cree®)
20W (1600lm nom Cree®)
08W (600lm nom Bridgelux®)
11W (825lm nom Bridgelux®)
16W (1100lm nom Bridgelux®)
08A-08W (460lm nom Bridgelux® Class A)
11W (660lm nom Bridgelux® Class A)
16W (860lm nom Bridgelux® Class A)
07W (650lm nom Soraa® 2" Light Engine)
10W (800lm nom Soraa® 2" Light Engine)
15W (800lm nom ValuDIM™™)

015MR16X-15W MAX MR16 LED Retrofit
050MR16X-50W MAX MR16

20W (1800lm nom Cree®)
28W (2200lm nom Cree®)
17W (1700lm nom Bridgelux®)
22W (2200lm nom Bridgelux®)
17W (1350lm nom Bridgelux® Class A)
22W (1750lm nom Bridgelux® Class A)

15W MAX PAR20 LED Retrofit
50W MAX PAR20
20W PAR20CMH
35 or 39W PAR20CMH

20W T4 GU6.5 CMH
35 or 39W T4 GU6.5 CMH

35W (3300lm nom Cree®)
41W (4000lm nom Cree®)
22W (2000lm nom Bridgelux®)
34W (3000lm nom Bridgelux®)
22W (1600lm nom Bridgelux® Class A)
34W (2350lm nom Bridgelux® Class A)
18W (1000lm nom Soraa® 3.75" Light Engine)
25W (1400lm nom Soraa® 3.75" Light Engine)

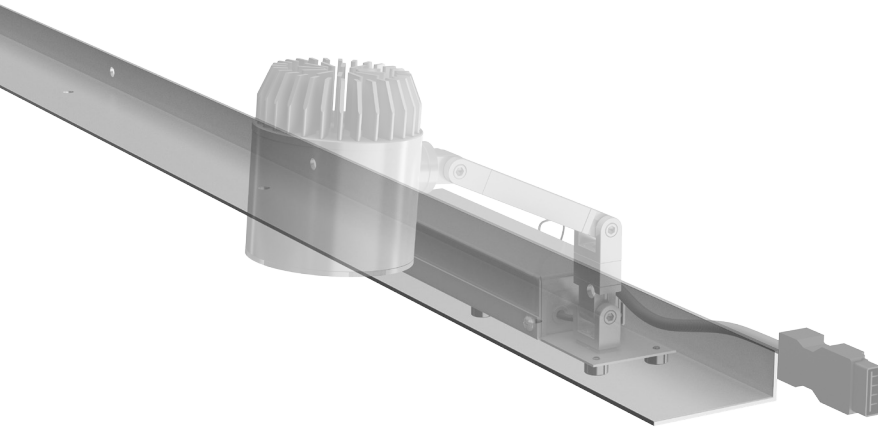
20W MAX PAR30 LED Retrofit
75W MAX PAR30
20W PAR30CMH
35 or 39W PAR30CMH
70W PAR30CMH

20W T4/T6 G12 CMH
35 or 39W T4/T6 G12 CMH
70W T4/T6 G12 CMH

20W MAX AR111 LED Retrofit
75W MAX AR111

22W CDMR111
35 or 39W CDMR111
70W CDMR111

EF400 System Simple Mounting Rail

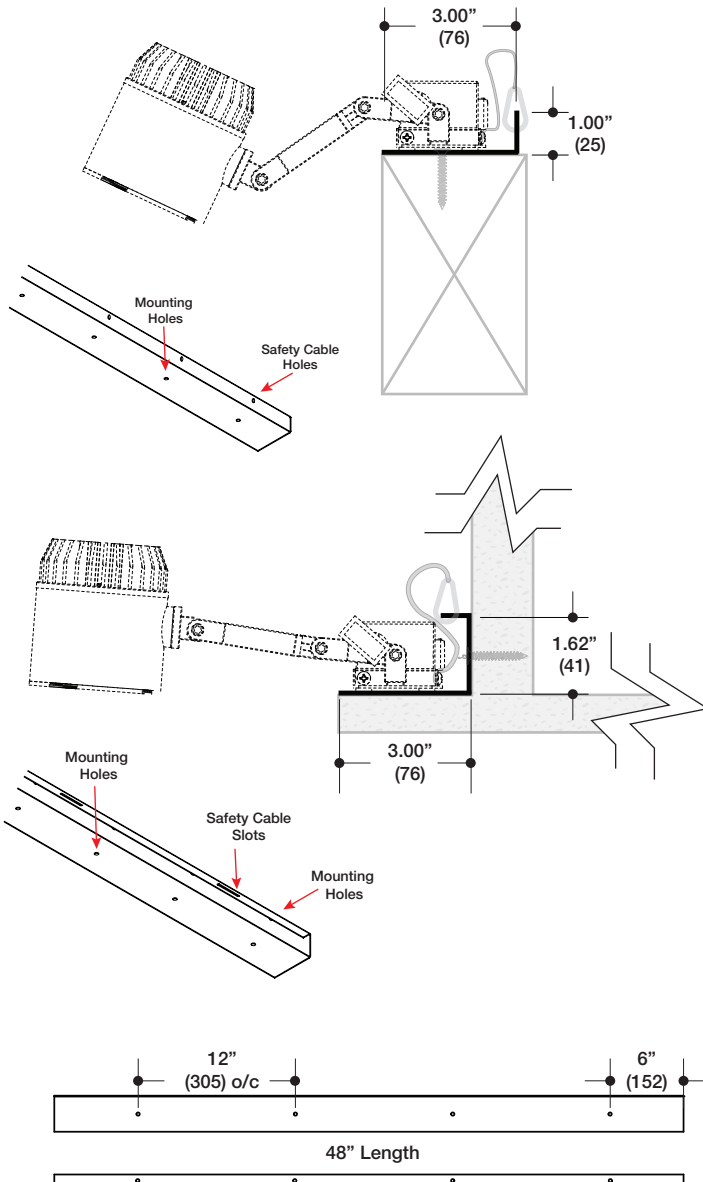


Simple Mounting Rail

Cat #	EF4	EF400 lighting trough section
Type	MTGHR MTGVR	Horizontal Surface mounting rail Vertical Surface mounting rail
Length	048	48" section
Example # EF4-MTGHR-048		

EF4

Simple Mounting Rail



Features

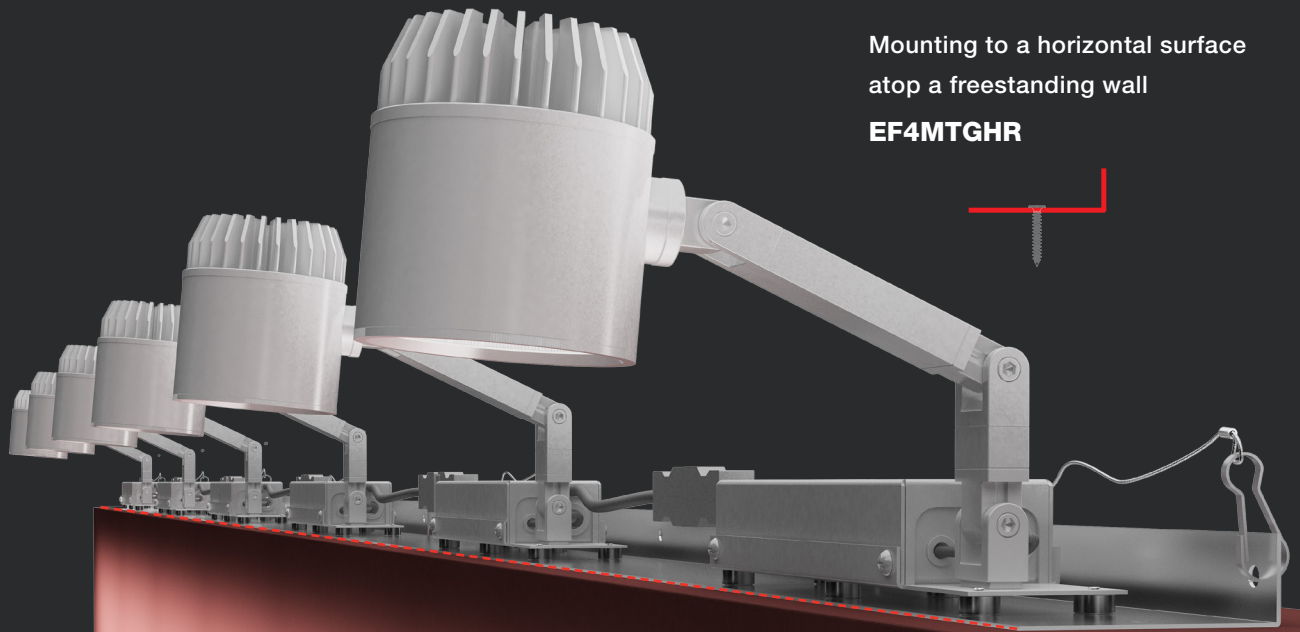
- Simple "L" rail for mounting EF400 light units
- Rails for vertical or horizontal mounting surfaces
- Fixtures secure to rail with magnets
- Fixtures may be moved anywhere along the rail
- EF400 channel housing not required
- Steel construction
- Mounting holes on both sides of rail



EF400 System Simple Mounting Rail

Mounting to a horizontal surface atop a freestanding wall

EF4MTGHR



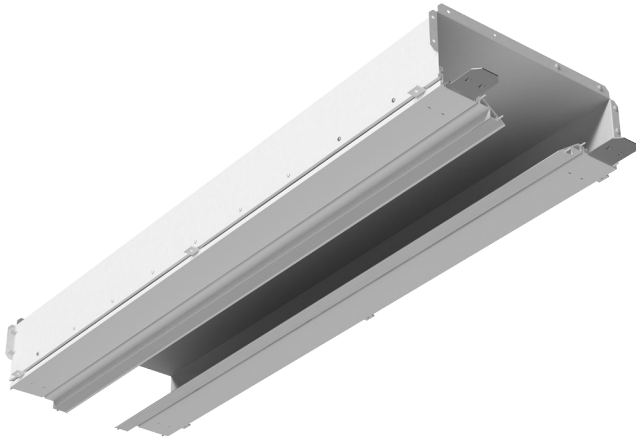
With the EF400 Simple Mounting Rail, there is no need for a housing to use the magnetic mounting of the EF400 light units. The "L" rail may be mounted to most horizontal or vertical surfaces through mounting holes on the rail. Holes are also provided to secure light unit safety cables. The Simple Rail is also field cuttable so as to enable cornering via mitered cuts.

Mounting to a vertical surface in an existing cove build-out

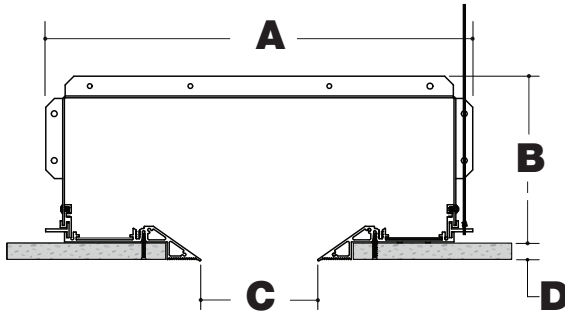
EF4MTGVR



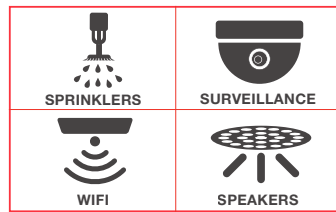
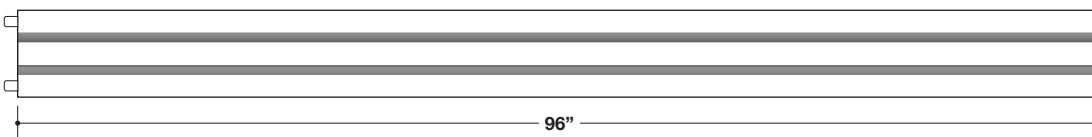
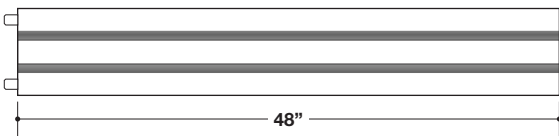
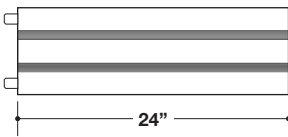
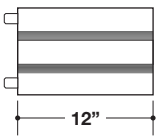
EF400 System Equipment Channel



EF4 Equipment Channel



Channel Size	A	B	C	D
B (4")	17.24"	6.08"	4.00"	0.75"
C (5")	18.24"	6.08"	5.00"	0.75"
D (6")	19.24"	9.08"	6.00"	0.75"



Equipment Channel

Cat #	EF4	EF400 equipment trough section
Size	B C D	4" slot aperture 5" slot aperture 6" slot aperture
Housing	N	New construction
Ceiling	S	Trimless Drywall For other ceiling types, consult the factory.
Equip. Type	BLNK HVAC FIRE SPKR NETW OCSE SECU	Blank panel HVAC supply or return diffuser* FIRE-sprinkler/smoke detector* Speaker/public address* WiFi/Network Equipment* Occupancy/Daylight Harvesting Sensor* Security/Alarm/Camera* *Equipment by others - all equipment except "BLNK" require special order/coordination/approval with factory for mounting details and templates
Length	012 024 048 096 XXX	12" section 24" section 48" section 96" section Custom length (May be ordered in whole inch dimensions) Sections longer than 96" will be configured and shipped in 96" sections or shorter.
Finish	BB WW XX	Black powder coat White powder coat Custom finish

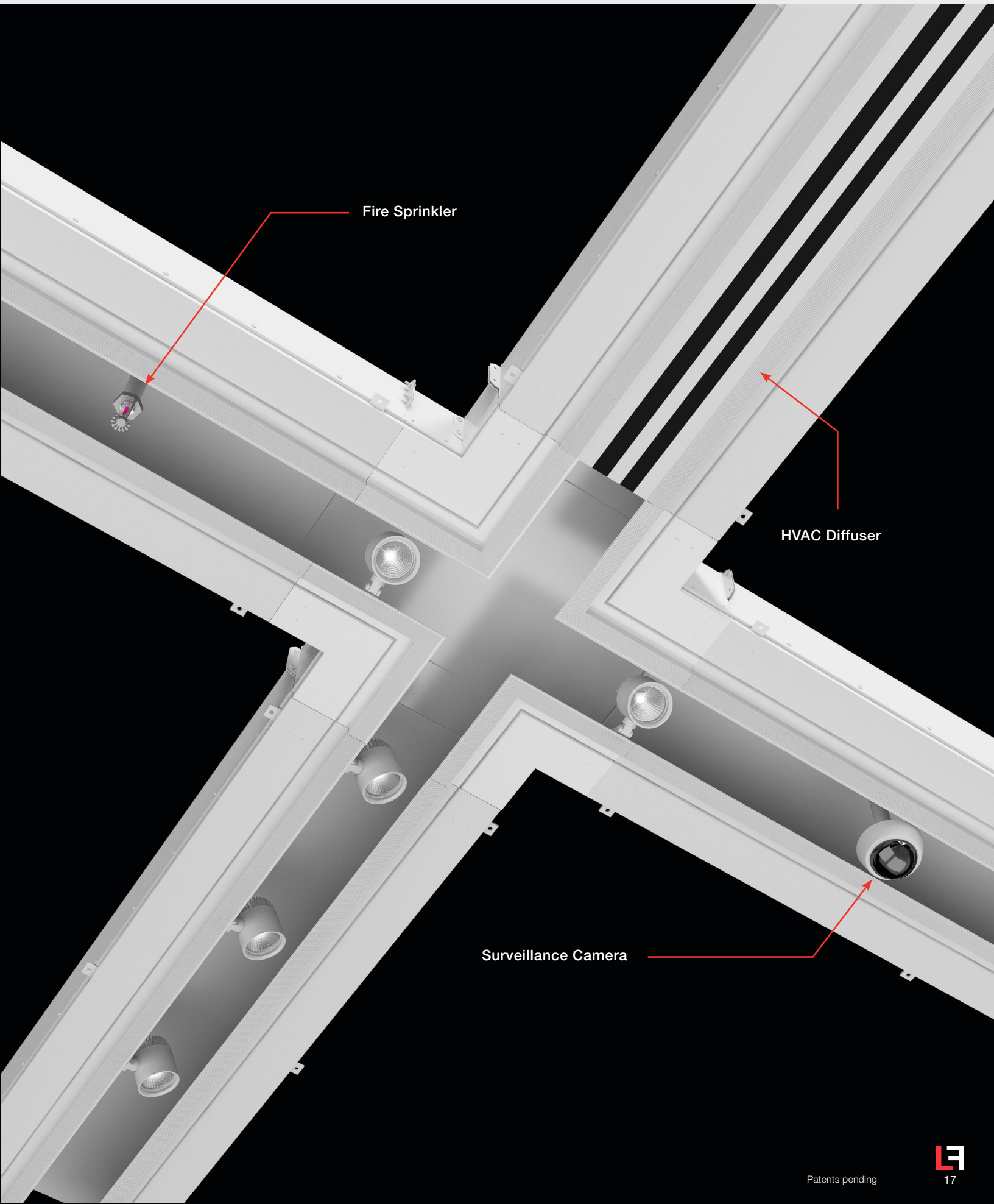
Example # EF4-B-N-S-BLNK-048-WW

Features

- Extruded aluminum aperture
- Trimless drywall or solid ceiling options
- Metal housing
- Single sections may be combined for continuous runs
- Variable position tie-down tabs for cable or threaded rod suspension
- Ancillary system components:
HVAC, Fire Sprinkler, Security Camera, A/V, Network, Occupancy Sensors



EF400 System Equipment Channel



Fire Sprinkler

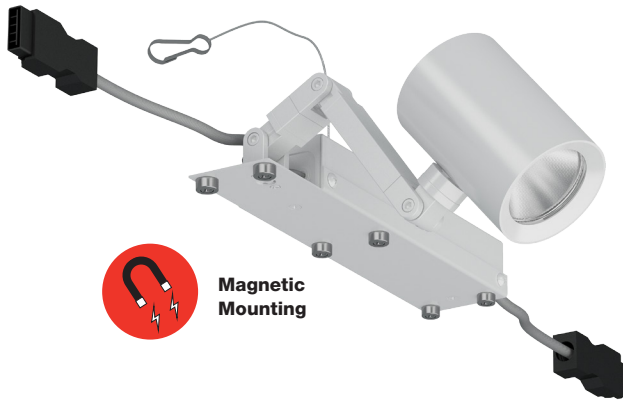
HVAC Diffuser

Surveillance Camera

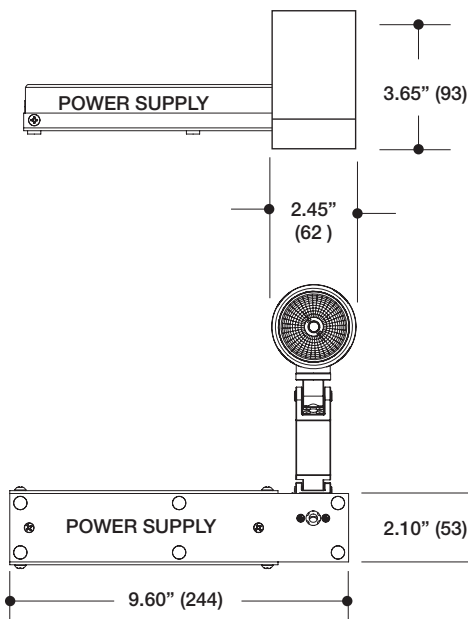
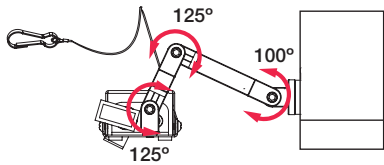
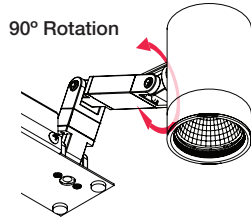




EF400 Light Units



Magnetic Mounting



Small Spotlight

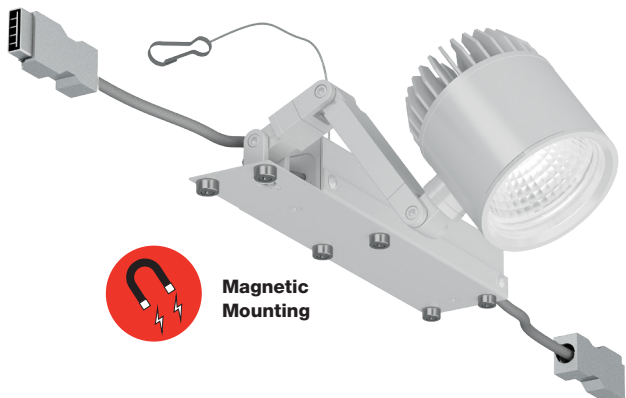
EF407B

Cat #	EF408B	Cylindrical LED spotlight for EF400 with variable adjustment
Source	020MR16X 035MR16X 050MR16X 020CM16X 039CM16X 015MR16X 07S 10S	MR16 20W MR16 35W MR16 50W 20W CMHMR16 39W CMHMR16 MR16 15W LED Retrofit 7W LED (650lm nom Soraa® 2" Light Engine) 10W LED (800lm nom Soraa® 2" Light Engine)
CRI / Color	8027 8030 8040 9527 9530 9540	For specifying Soraa® LED Light Engine 80CRI / 2700K 80CRI / 3000K 80CRI / 4000K 95CRI / 2700K 95CRI / 3000K 95CRI / 4000K
Power Supply	ET EB D1 D2	Electronic Transformer Electronic Metal Halide Ballast Phase Dimming (Soraa only) 0-10V Dimming Driver (Soraa only)
Voltage	1 U	120V (D1 only) 120-277V (D2 only)
Finish	BB WW	Matte Black Matte White
Example #		EF407B-020MR16X-ET-1-BB

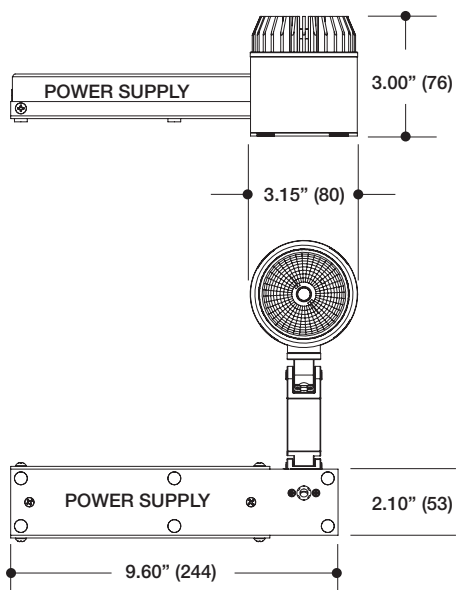
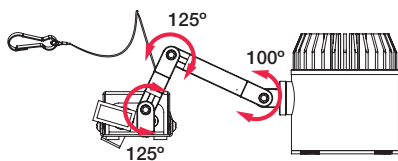
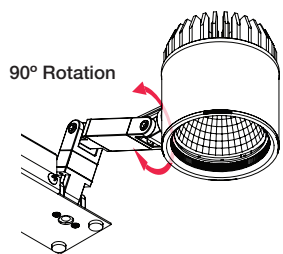
Features

- 2.45" diameter cylinder
- Four-point arm articulation - Friction lock
- 90° x 90° head rotation
- Aluminum optical housing
- Powder coat finish
- Electronic, magnetic transformer or metal halide ballast in tandem enclosure
- 12V MR16 50W max - De-rate Labels Available
- CMHMR16 in 20W or 39W
- LED Retrofit 15W max - Works with SORAA®
- Soraa® LED Light Engine
- Easy relamping via front ring snap-in catch action
- Side channel magnetic mount
- Designed for EF400 - EF4BNS Channel
- Suitable for damp location





Magnetic Mounting



Small LED Spotlight

EF408B

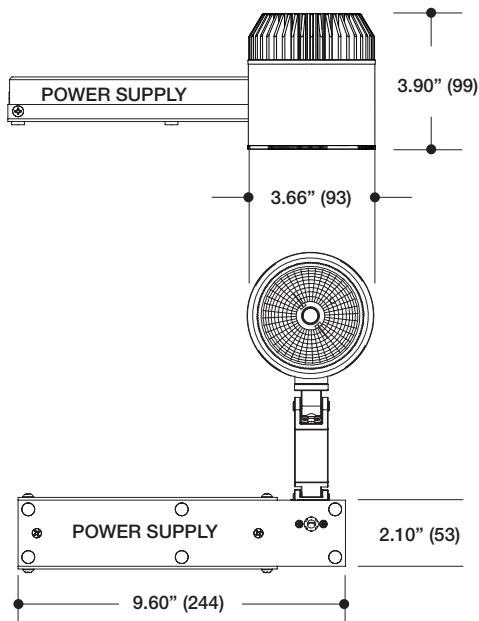
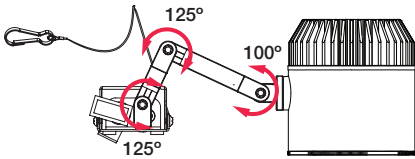
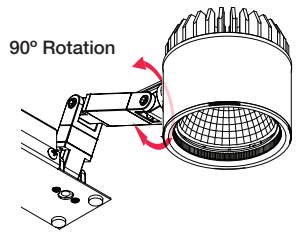
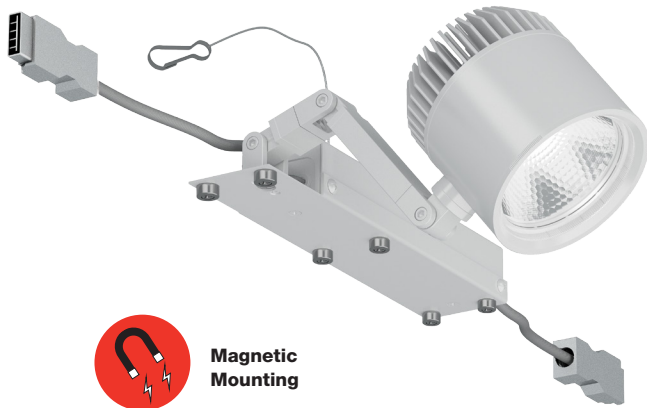
Cat #	EF408B	Cylindrical LED spotlight for EF400 with variable adjustment
LED	09C 14C 20C 28C	09W LED 900 lm nom. 14W LED 1200 lm nom. 20W LED 1600 lm nom. 28W LED 2200 lm nom.
CRI / Color	8027 8030 8035 8040 8050 9527 9530 9535 9540 9550	80CRI / 2700K 80CRI / 3000K 80CRI / 3500K 80CRI / 4000K 80CRI / 5000K 95CRI / 2700K 95CRI / 3000K 95CRI / 3500K 95CRI / 4000K 95CRI / 5000K
Beam	N M W V	Narrow 13° Medium 22° Wide 30° Very Wide 50°
Power Supply	D1 D2	Phase Dimming 0-10V Dimming Driver
Voltage	1 U	120V (D1 only) 120-277V (D2 only)
Finish	BB WW	Matte Black Matte White
Example #		EF408B-09C-8030-N-D1-1-BB

Features

- 3.15" diameter cylinder
- Four-point arm articulation - Friction lock
- 90° x 90° head rotation - Friction lock
- Die cast aluminum optical housing
- Powder coat finish
- Field-replaceable optics
- Field-replaceable LED driver
- Dimmable
- Accepts 1 or more optical accessories
- Aluminum extension arm
- Side channel magnetic mount
- Designed for EF400 - EF4BNS Channel
- Suitable for damp location



EF400 LED Light Units



Medium LED Spotlight

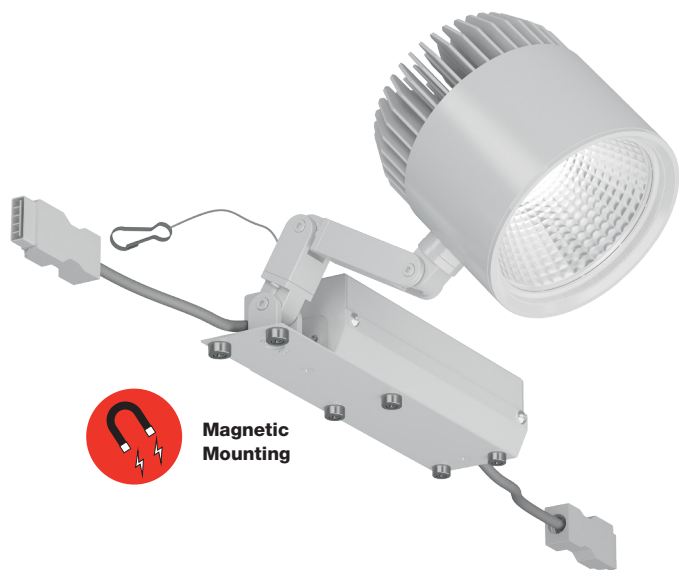
EF408C

Cat #	EF408C	Cylindrical LED spotlight for EF400 with variable adjustment
LED	28C 35C 41C	28W LED 2125 lm nom. 35W LED 2970 lm nom. 41W LED 3350 lm nom.
CRI / Color	8027 8030 8035 8040 8050 9527 9530 9535 9540 9550	80CRI / 2700K 80CRI / 3000K 80CRI / 3500K 80CRI / 4000K 80CRI / 5000K 95CRI / 2700K 95CRI / 3000K 95CRI / 3500K 95CRI / 4000K 95CRI / 5000K
Beam	N M W	Narrow 14° Medium 24° Wide 42°
Power Supply	D1 D2	Phase Dimming 0-10V Dimming Driver
Voltage	1 U	120V (D1 only) 120-277V (D2 only)
Finish	BB WW	Matte Black Matte White
Example # EF408C-28C-8030-N-D1-1-BB		

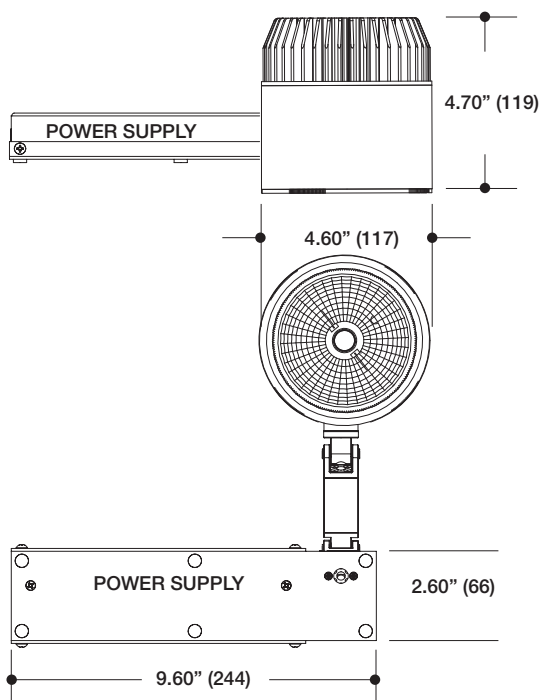
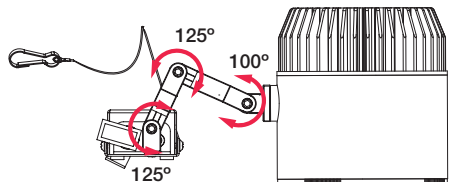
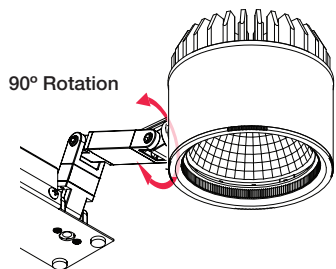
Features

- 3.66" diameter cylinder
- Four-point arm articulation - Friction lock
- 90° x 90° head rotation - Friction lock
- Die-cast aluminum optical housing
- Powder coat finish
- Field-replaceable optics
- Field-replaceable LED driver
- Dimmable
- Aluminum extension arm
- Side channel magnetic mount
- Designed for EF400 - EF4CNS Channel
- Suitable for damp location





Magnetic Mounting



Large LED Spotlight

EF408D

Cat #	EF408D	Cylindrical LED spotlight for EF400 with variable adjustment
LED	35C 41C 55C	35W LED 2970 lm nom. 41W LED 3350 lm nom. 55W LED 4563 lm nom.
CRI / Color	8027 8030 8035 8040 8050 8050 9527 9530 9535 9540 9550	80CRI / 2700K 80CRI / 3000K 80CRI / 3500K 80CRI / 4000K 80CRI / 5000K 95CRI / 2700K 95CRI / 3000K 95CRI / 3500K 95CRI / 4000K 95CRI / 5000K
Beam	N M W V	Narrow 15° Medium 27° Wide 42° Very Wide 58°
Power Supply	D1 D2	Phase Dimming 0-10V Dimming Driver
Voltage	1 U	120V (D1 only) 120-277V (D2 only)
Finish	BB WW	Matte Black Matte White

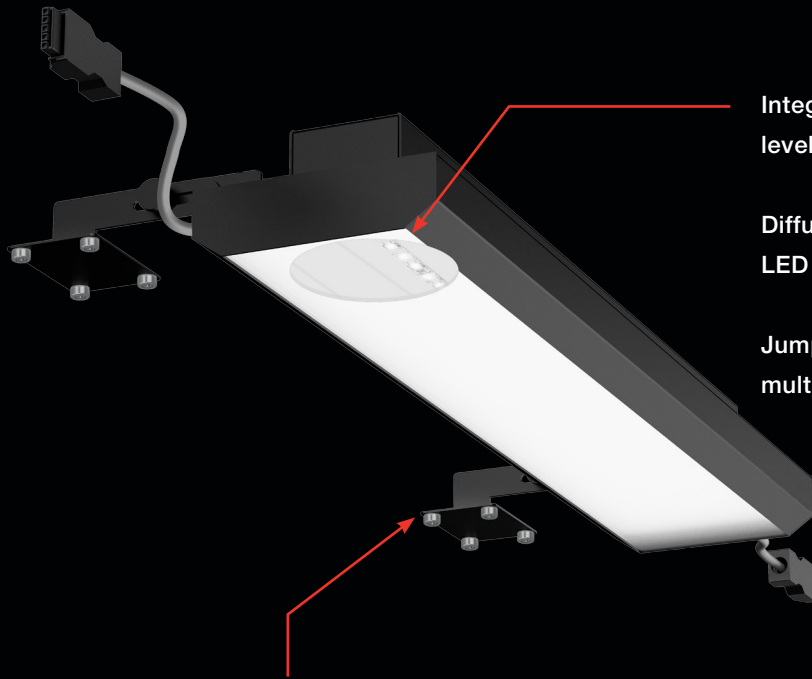
Example # EF408B-35C-8030-N-D1-1-BB

Features

- 4.60" diameter cylinder
- Four-point arm articulation - Friction lock
- 90° x 90° head rotation - Friction lock
- Die-cast aluminum optical housing
- Powder coat finish
- Field-replaceable optics
- Field-replaceable LED driver
- Dimmable
- Aluminum extension arm
- Side channel magnetic mount
- Designed for EF400 - EF4DNS Channel
- Suitable for damp location



EF400 LED Linear Light Units



Integral LED strip is available in three power levels up to 1200 lumens per foot.

Diffuser is easily removed for maintenance. LED board and driver are replaceable.

Jumper wires are available for connecting multiple fixtures together.

EF410 uses our exclusive magnetic mounting system for lighting. Fixtures may be placed and moved anywhere along the opening.

18" Fixture in 48" Channel



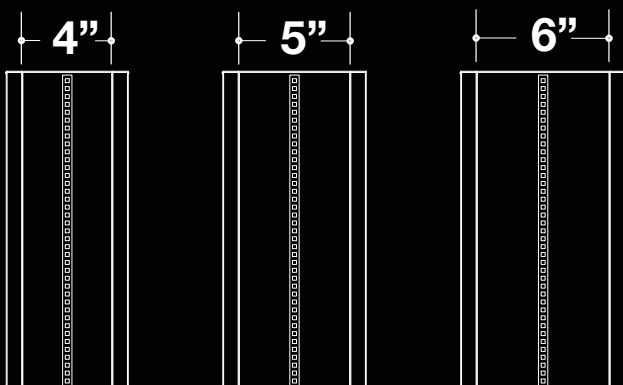
24" Fixture in 48" Channel



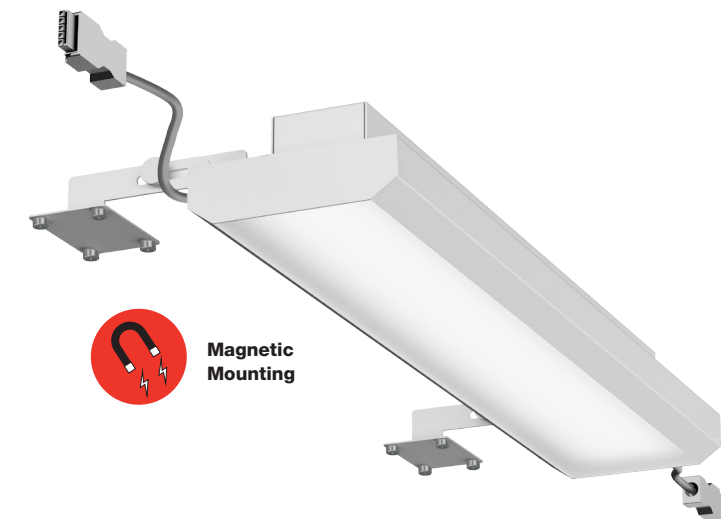
48" Fixture in 48" Channel



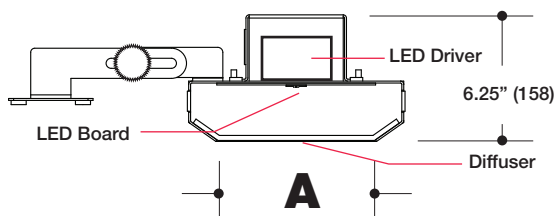
The Linear LED housing is available in three apertures to accommodate the three sizes of EF400 channel.



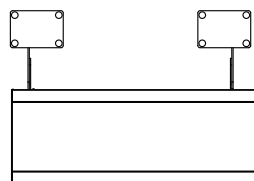
EF400 LED Linear Light Units



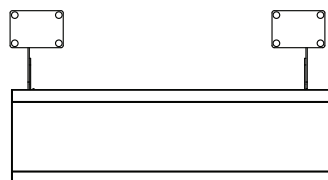
Magnetic Mounting



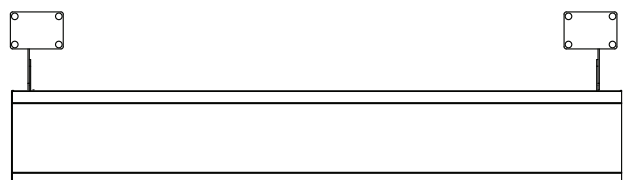
Channel Size	A
B (4")	4"
C (5")	5"
D (6")	6"



18" (457)



24" (610)



48" (1219)

Linear LED Unit

EF410

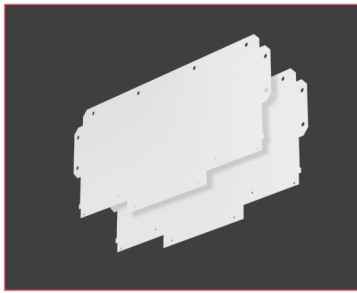
Cat #	EF410	EF400 Linear LED light module
Size	B C D	4" slot aperture 5" slot aperture 6" slot aperture
LED	04F 08F 12F	4W/440lm/ft LED 8W/840lm/ft LED 12W/1200lm/ft LED
CRI	80 90	80 CRI 90 CRI
CCT	27 30 35 40	2700K 3000K 3500K 4000K (90CRI version Consult Factory)
Lens	LN	Satin White Acrylic Lens
Power Supply	D2 D3 D4 DE	0-10V Dimming Lutron HiLume 1% (120V only) Lutron HiLume 1% EcoSystem™ & 3-Wire Lutron HiLume 1% EcoSystem™ Soft-On Fade-to-Black
Length	018 024 048	18" length 24" length 48" length
Voltage	1 U	120V (D3 only) 120-277V Universal
Finish	BB WW	Matte Black Matte White
Example #		EF410-B-04F-90-27-LN-D2-024-1-WW

Features

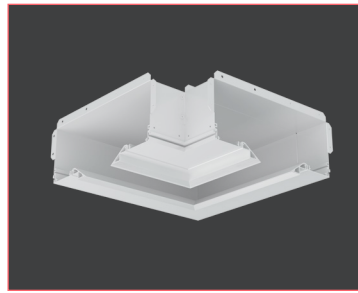
- Available in 3 different sizes
- Three power levels up to 1200 lumens per foot
- Tight binning ensures color consistency within 2 MacAdam ellipses
- Dense pitch for uniform output
- Symmetric distribution / protective lens
- Quick disconnect wiring for continuous runs
- Designed for EF400 Channel
- Suitable for damp location



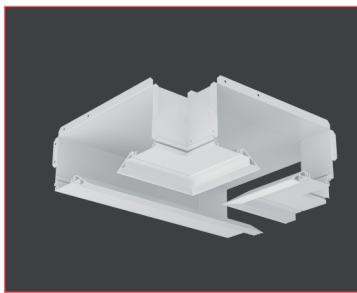
EF400 System Channel Accessories



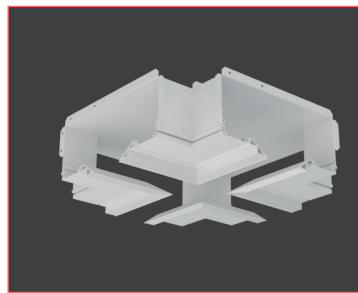
EC - Flat end cap



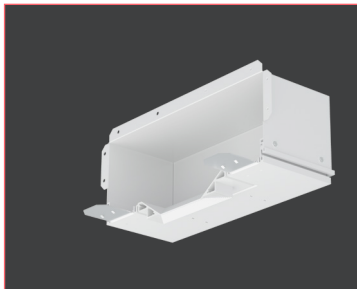
EL - 90° (2-leg) corner



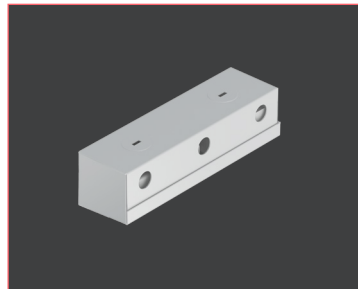
TE - 90° (3-leg) corner



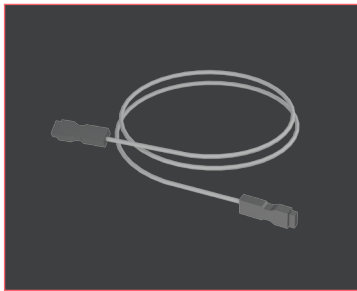
XC - 90° (4-leg) corner



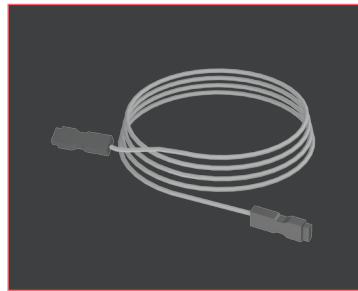
HE - Horseshoe end cap



FDU - Power starter feed



JW024 - 24" jumper wire



JW048 - 48" jumper wire

Channel Accessories

Cat #	EF4	EF400 accessory
Size	B C D	4" slot aperture 5" slot aperture 6" slot aperture
Housing	N	New construction
Ceiling	X S P	N/A (EC only) Trimless Drywall Solid Ceiling
Accessory	EC EL TE XC HE	Flat end cap 90° ELL 2-leg corner 90° TEE 3-leg corner 90° X 4-leg corner Horseshoe wrap-around end cap
Finish	BB WW XX	Black powder coat White powder coat Custom finish
Example # EF4-B-N-S-EL-WW		

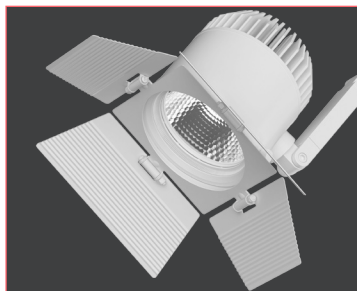
Power Feed Accessories

Cat #	EF4	EF400 equipment trough section
Type	FDU	Power Starter Feed/Box (7A) 5-Wire Capable (EF4 only)
Finish	BB WW	Black powder coat White powder coat
Example # EF4-FDU-WW		

Jumper Wire Accessories

Cat #	EFX	EF System compatible
Type	JW024 JW048	24" Long, 5-Wire Capable (EFX only) 24" Long, 5-Wire Capable (EFX only)
Color	BB WW	Black White
Example # EFX-JW024-WW		

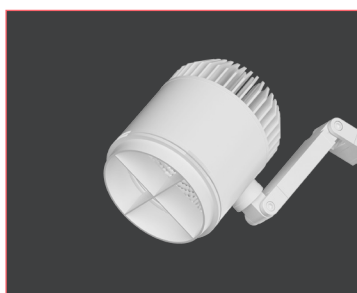
EF400 System Optical Accessories



Barndoor

Barn Door

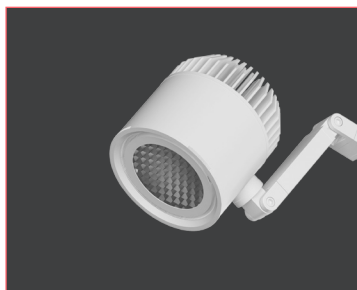
Cat #	OPT	Optical accessory
Size	EF208B EF208C EF208D	Small Medium Large
Type	BD	Barn Door
Finish	BB WW	Black powder coat White powder coat
Example # OPT-EF208B-BDWW		



Cross Baffle

Cross Baffle

Cat #	OPT	Optical accessory
Size	EF208B EF208C EF208D	Small Medium Large
Type	CB	Cross Baffle
Finish	BB WW	Black powder coat White powder coat
Example # OPT-EF208B-CBWW		



Hex Louver

Hex Louver

Cat #	OPT	Optical accessory
Size	EF208B EF208C EF208D	Small Medium Large
Type	HXL	Hex Louver
Finish	BB	Black powder coat
Example # OPT-EF208B-HXLWW		



Wall Wash

Wall Wash

Cat #	OPT	Optical accessory
Size	EF208B EF208C EF208D	Small Medium Large
Type	WW	Wall Wash
Finish	BB WW	Black powder coat White powder coat
Example # OPT-EF208B-WWWW		

Note: Other optical accessories such as lenses, louvers and filters are available. Consult www.lfilluminatiion.com for full specs and ordering info.

Live Horseshoe End Cap

HVAC

8' Linear LED (2 x 4')

HVAC

Surveillance Camera

Sprinkler

The customization capabilities of the EF System are truly endless. Here is a small demonstration of what can be achieved in a single application.

4' Linear LED

90° "T" Return

Sprinkler

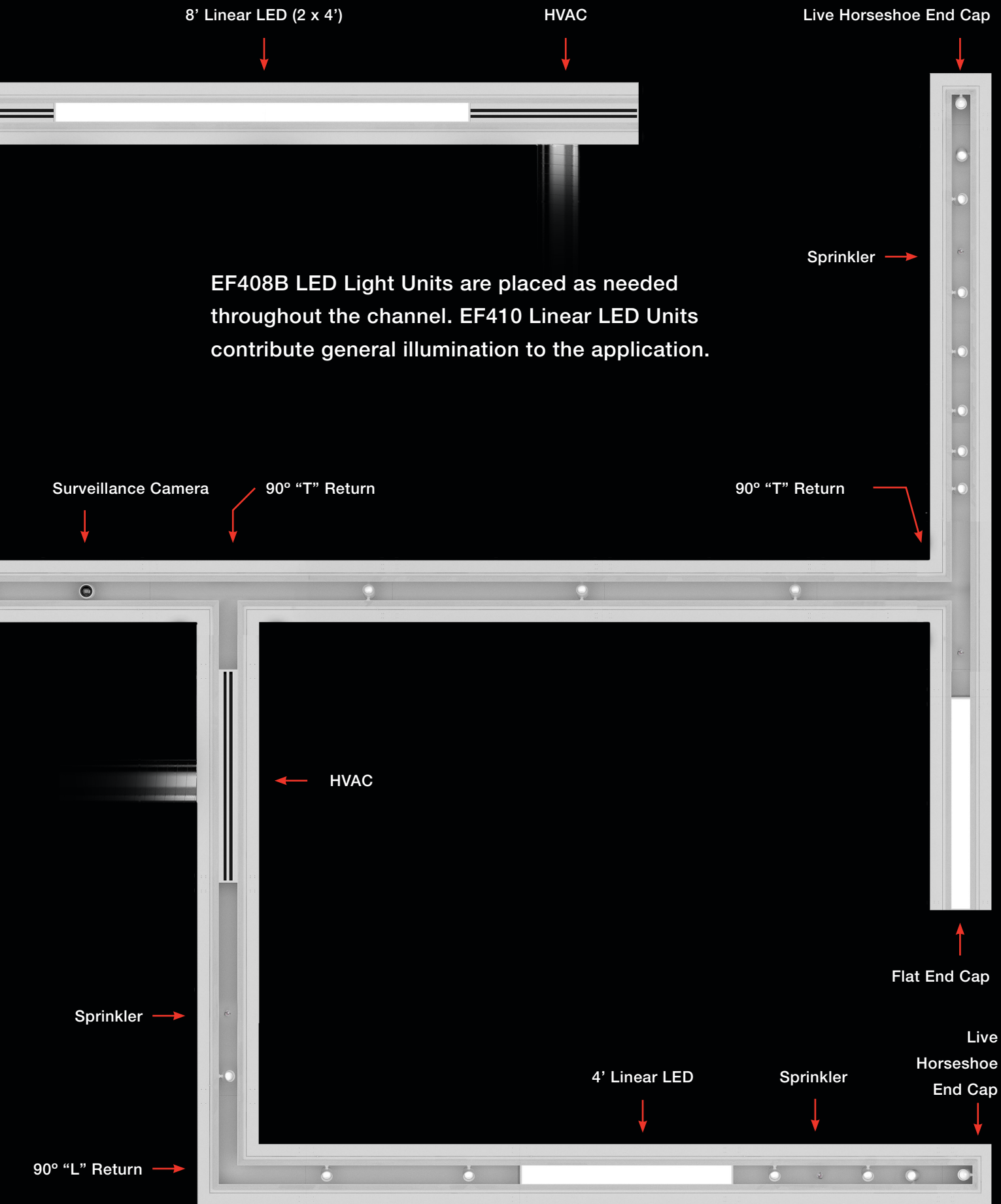
HVAC

Sprinkler 90° "T" Return

90° "L" Return

90° "L" Return

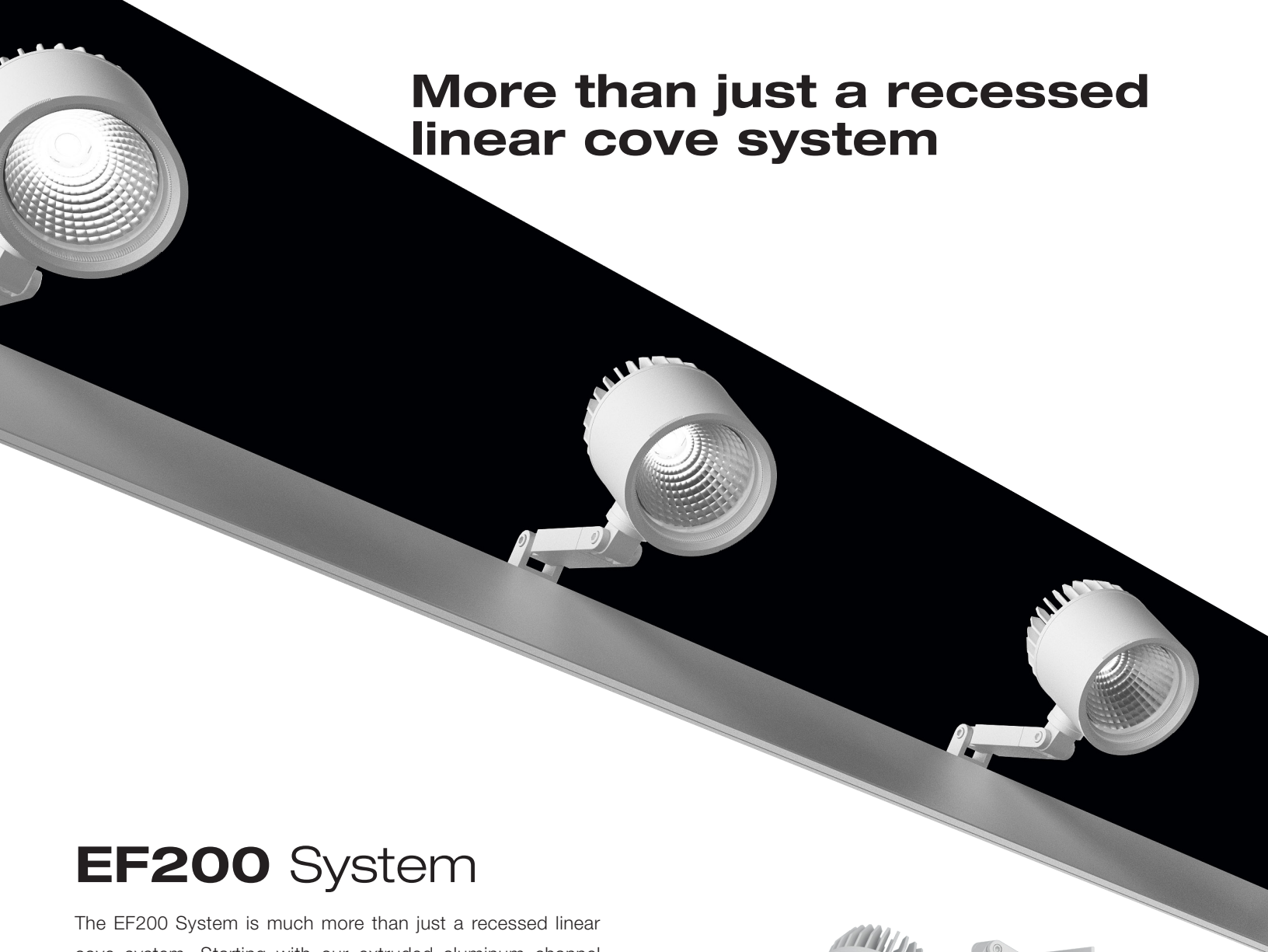
90° "L" Return







More than just a recessed linear cove system



EF200 System

The EF200 System is much more than just a recessed linear cove system. Starting with our extruded aluminum channel with its “Zero Edge” trimless edge, the EF200 may be installed to build out a linear cove along the perimeter of a room, along the edge of a free-floating portion of a ceiling, or two channels may be installed facing each other in order to form a recessed slot in the ceiling.

Along with the extruded aluminum channel system, EF200 also offers fully adjustable accent light head units which are movable to any location along the channel length. The channel may also accommodate linear LED units for cove lighting. EF200 uses standard 4’, 6’, 8’, & 10” straight channel runs with 90° return modules to achieve any number of cove, perimeter, or recessed slot lighting applications.

Three unique accent light units are offered for use with the EF200 channel. The accent light units include tilt and rotation adjustment with die-cast lamp holders and articulating arms.



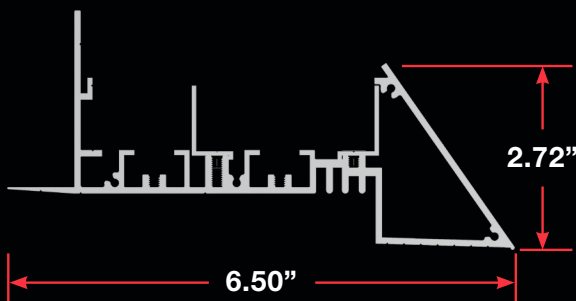
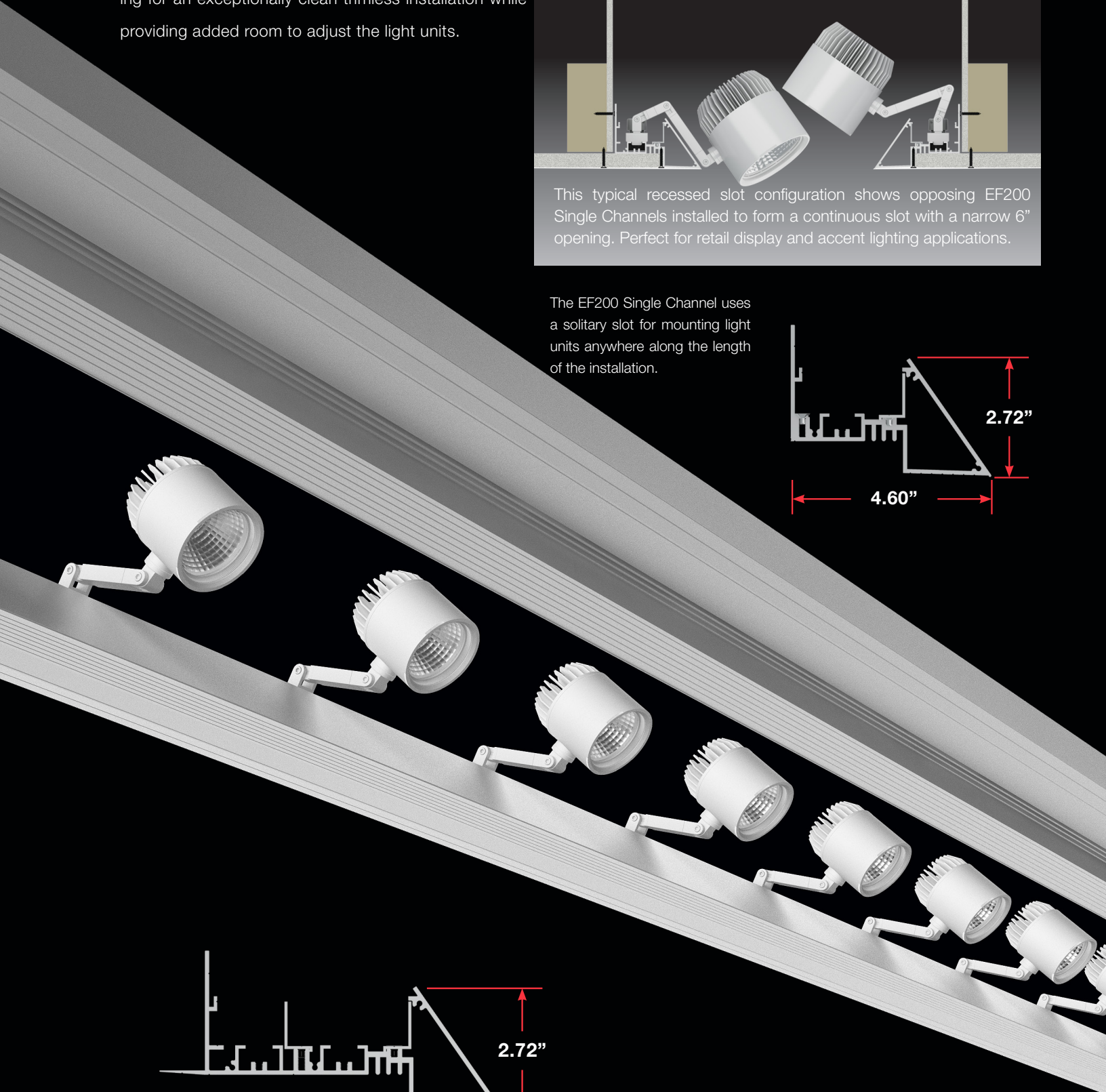
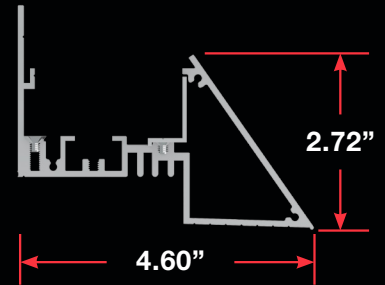
EF200 System

The EF200 System channel offers a "Zero Edge" opening for an exceptionally clean trimless installation while providing added room to adjust the light units.



This typical recessed slot configuration shows opposing EF200 Single Channels installed to form a continuous slot with a narrow 6" opening. Perfect for retail display and accent lighting applications.

The EF200 Single Channel uses a solitary slot for mounting light units anywhere along the length of the installation.



The Dual Channel adds a secondary slot to accommodate linear LED units for cove lighting. See page 36 - 39 for light units.

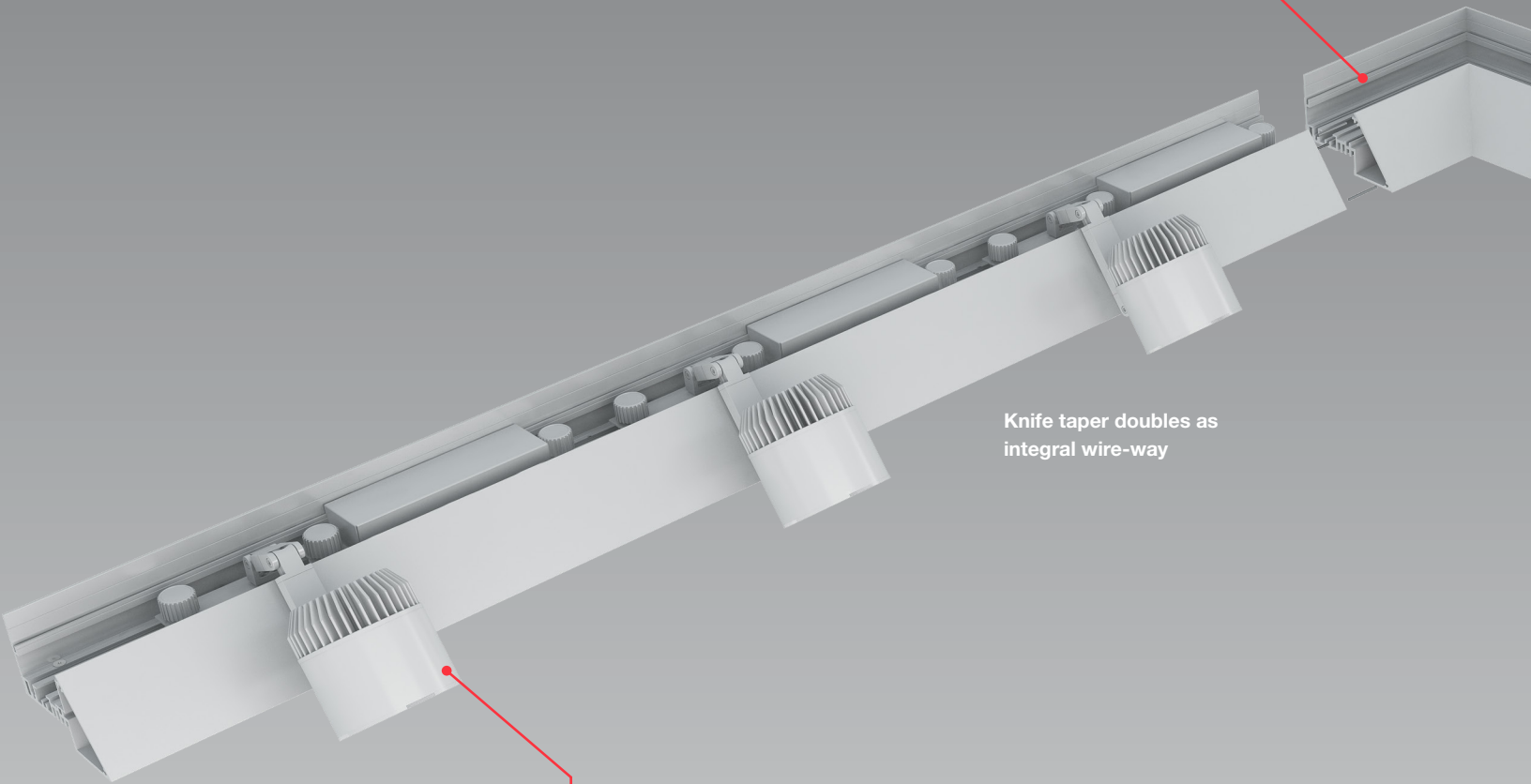
EF200



90° "L" Module

90° elbow and "tee" modules are available for long continuous installations.

Inside Corner
90° Return Module



Knife taper doubles as
integral wire-way

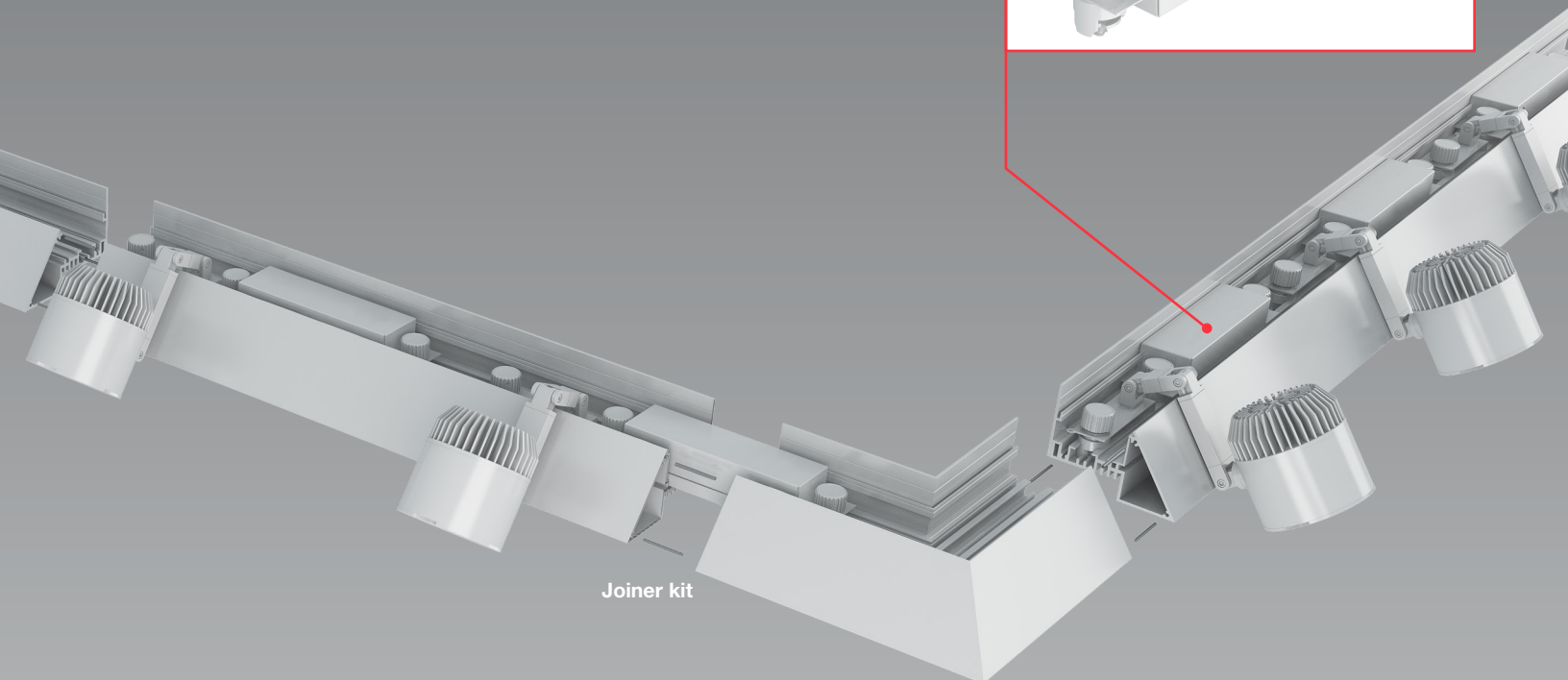
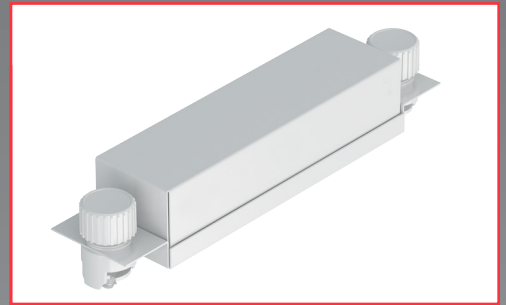


Moveable LED Spotlights

LED Lighting Units may be positioned
anywhere along the channel length.
See pages 36-38 for details

Individual Power Supplies & Wiring Enclosure

Power supply in tandem enclosure mounts to same slot as light units. Die cast aluminum construction. Supports through-wire configurations.

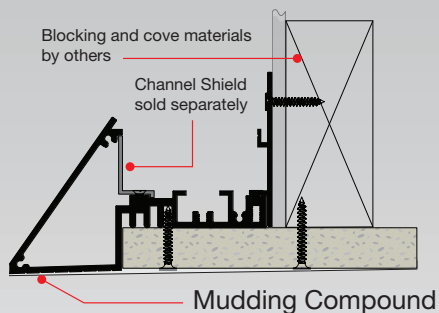


Joiner kit

Outside Corner
90° Return Module

Trimless Knife Taper

The sharp, knife-like edge of the channel ensures a clean trimless installation while allowing for greater flexibility in fixture aiming.



Typical Single Channel Cove Installation shown for demonstration purposes. See pages 42-43 for other application ideas.

Dual Channel Slot

The EF200 Dual Channel allows for placement of linear LED fixtures for indirect uplighting. See page 39 for details.



EF200 Cove Lighting & Mill-work Channel

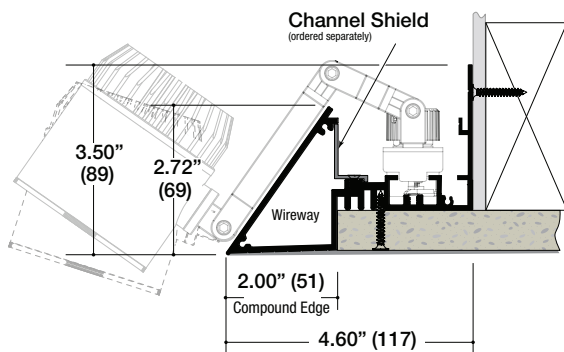


Single Channel

Cat #	EFK1	EF200 single extruded aluminum channel
Length	048	48" section
	072	72" section
	096	96" section
	120	120" section
Finish	BB	Black powder coat
	WW	White powder coat
	XX	Custom finish
Example # EFK1-072-WW		

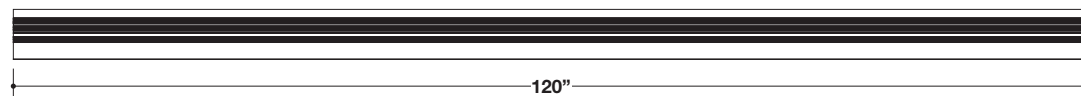
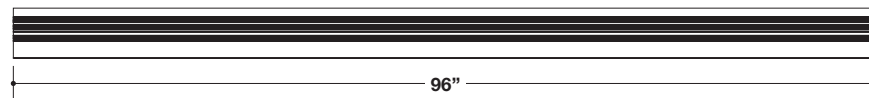
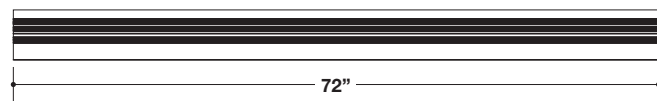
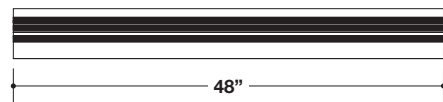
EFK1

Single Channel

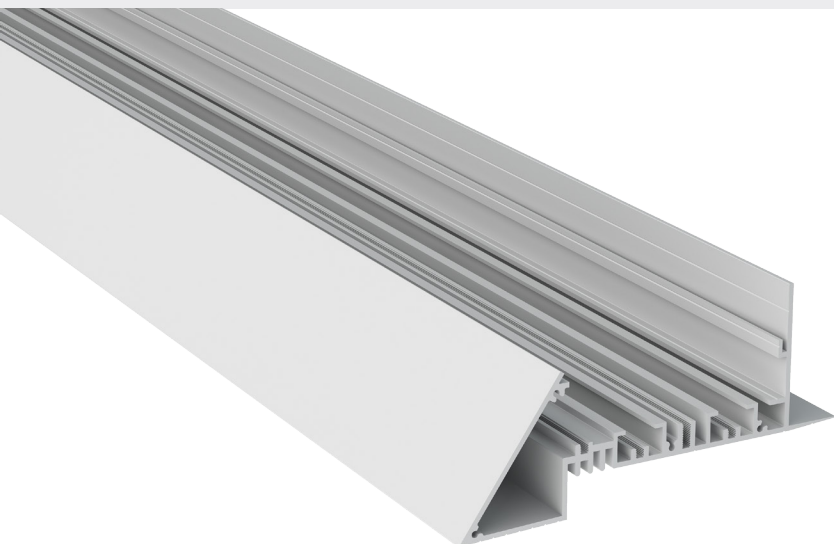


Features

- All extruded aluminum construction
- Use in cove, slot, or perimeter applications as a lighting system or as a replacement for mill-work
- Clean, unobtrusive trimless installation
- Unlimited configuration possibilities with 4', 6', 8', or 10' lengths and 90° "L" units
- May be custom ordered to specified curves and ellipses
- Single for accent lighting units
- Integral wire-way
- Field-cutable channel
- Move or upgrade light units in the field
- Add fixtures after installation
- Powder coat finish



EF200 Cove Lighting & Mill-work Channel

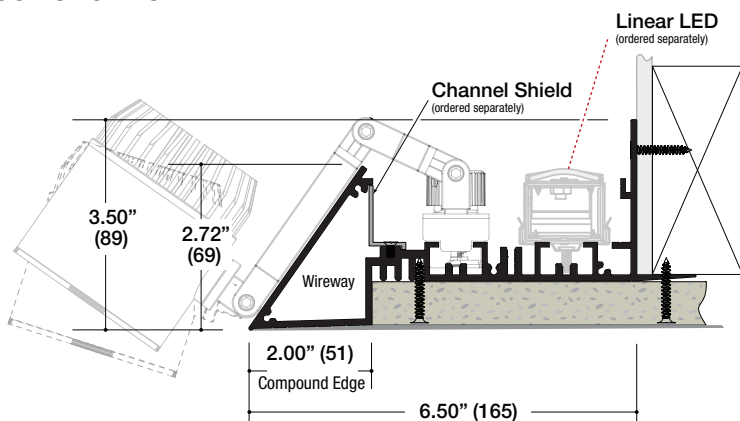


Dual Channel

Cat #	EFK2	EF200 dual extruded aluminum channel
Length	048	48" section
	072	72" section
	096	96" section
	120	120" section
Finish	BB	Black powder coat
	WW	White powder coat
	XX	Custom finish
Example # EFK2-072-WW		

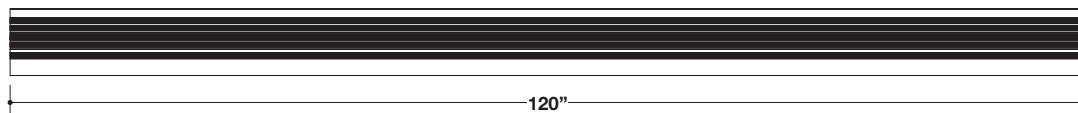
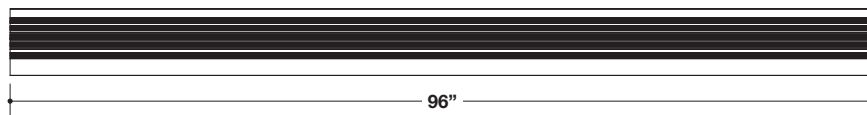
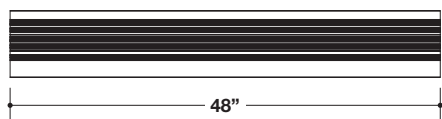
EFK2

Dual Channel

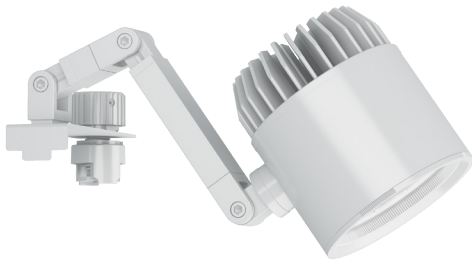


Features

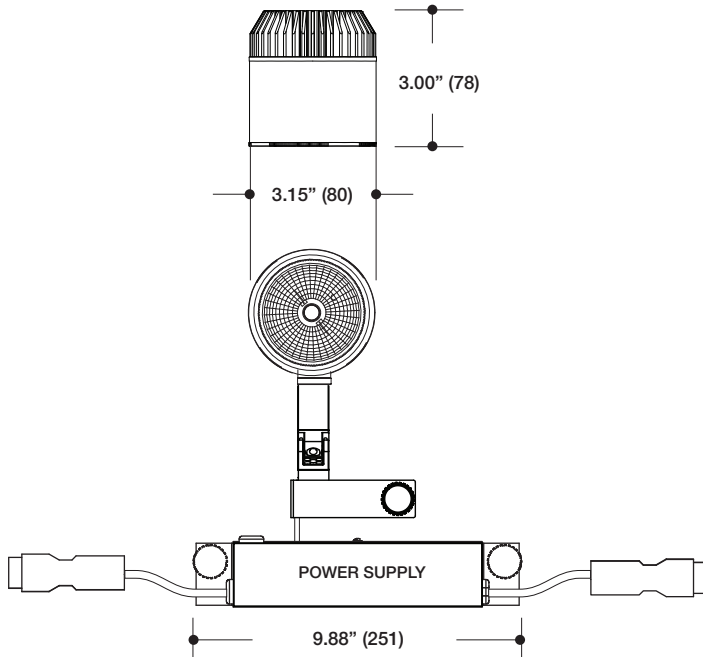
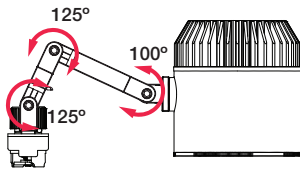
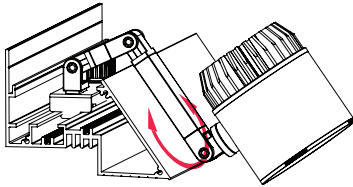
- All extruded aluminum construction
- Use in cove, slot, or perimeter applications as a lighting system or as a replacement for mill-work
- Clean, unobtrusive trimless installation
- Unlimited configuration possibilities with 4', 6', 8', or 10' lengths and 90° "L" units
- May be custom ordered to specified curves and ellipses
- Dual slots for accent and linear lighting units
- Integral wire-way
- Field-cutable channel
- Move or upgrade light units in the field
- Add fixtures after installation
- Powder coat finish



EF200 LED Light Units



90° Rotation



Small LED Spotlight

EF208B

Cat #	EF208B	Small Cylindrical LED spotlight for EF200 with variable adjustment
LED	09C 14C 20C 28C	09W LED 800 lm nom. 14W LED 1200 lm nom. 20W LED 1600 lm nom. 28W LED 2200 lm nom.
CRI / Color	8027 8030 8035 8040 8050 9527 9530 9535 9540 9550	80CRI / 2700K 80CRI / 3000K 80CRI / 3500K 80CRI / 4000K 80CRI / 5000K 95CRI / 2700K 95CRI / 3000K 95CRI / 3500K 95CRI / 4000K 95CRI / 5000K
Beam	N M W V	Narrow 13° Medium 22° Wide 30° Very Wide 50°
Power Supply	D1 D2	Phase Dimming 0-10V Dimming Driver
Voltage	1 U	120V (D1 only) 120-277V (D2 only)
Finish	BB WW XX	Matte Black Matte White Custom Color

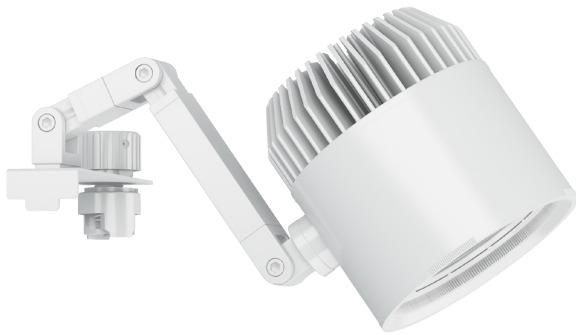
Example # EF208B-09C-8030-N-D1-1-BB

Features

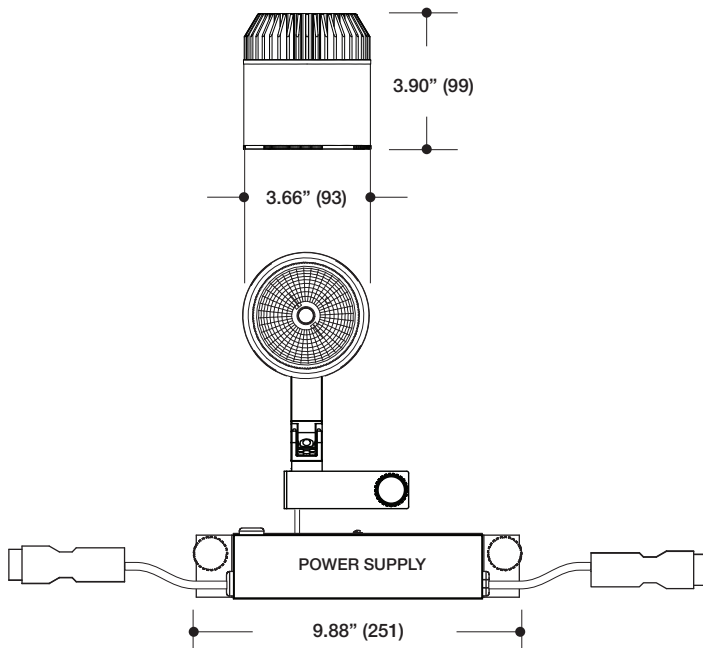
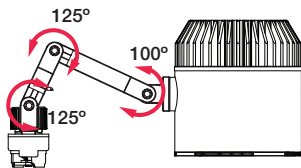
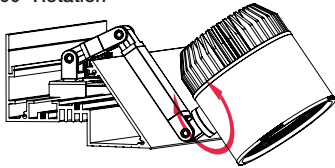
- 3.15" diameter cylinder
- Four-point arm articulation - Friction lock
- 100° x 100° head rotation - Friction lock
- Die cast aluminum optical housing
- Field-replaceable integral LED module
- Field-changeable optic
- Easy access via front ring snap-in catch action
- Dimmable.
- Field-replaceable LED driver
- Snap in, twist-lock mounting
- Suitable for damp location



EF200 LED Light Units



90° Rotation



Medium LED Spotlight

EF208C

Cat #	EF208C	Medium Cylindrical LED spotlight for EF200 with variable adjustment
LED	28C 35C 41C	28W LED 2125 lm nom. 35W LED 2970 lm nom. 41W LED 3350 lm nom.
CRI / Color	8027 8030 8035 8040 8050 9527 9530 9535 9540 9550	80CRI / 2700K 80CRI / 3000K 80CRI / 3500K 80CRI / 4000K 80CRI / 5000K 95CRI / 2700K 95CRI / 3000K 95CRI / 3500K 95CRI / 4000K 95CRI / 5000K
Beam	N M W	Narrow 14° Medium 24° Wide 42°
Power Supply	D1 D2	Phase Dimming 0-10V Dimming Driver
Voltage	1 U	120V (D1 only) 120-277V (D2 only)
Finish	BB WW XX	Matte Black Matte White Custom Color

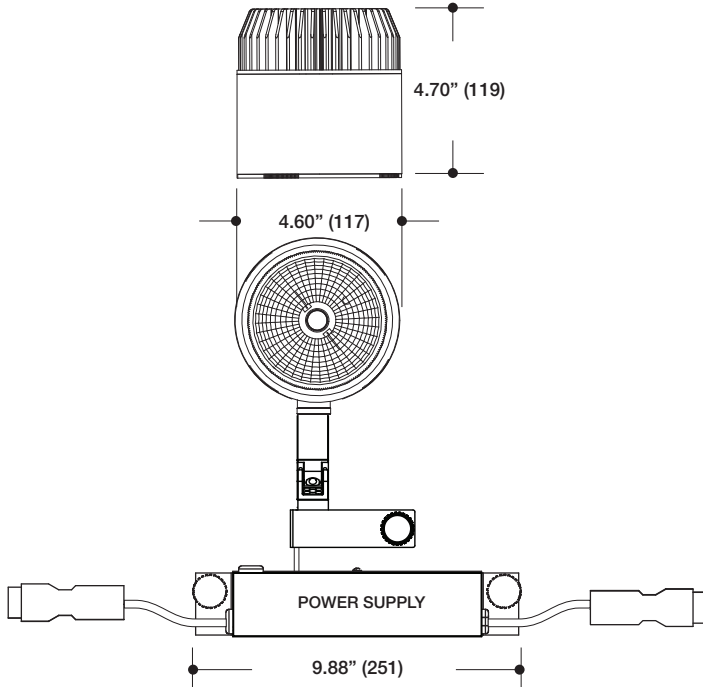
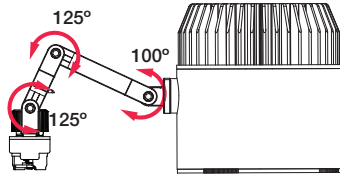
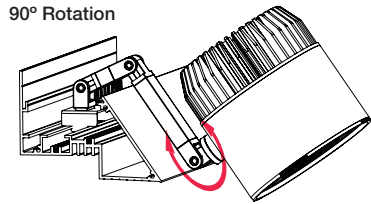
Example # **EF208C-28C-8030-N-D1-1-BB**

Features

- 3.66" diameter cylinder
- Four-point arm articulation - Friction lock
- 90° x 90° head rotation - Friction lock
- Die cast aluminum optical housing
- Field-replaceable integral LED module
- Field-changeable optic
- Easy access via front ring snap-in catch action
- Dimmable
- Field-replaceable LED driver
- Snap in, twist-lock mounting
- Suitable for damp location



EF200 LED Light Units



Small LED Spotlight

EF208D

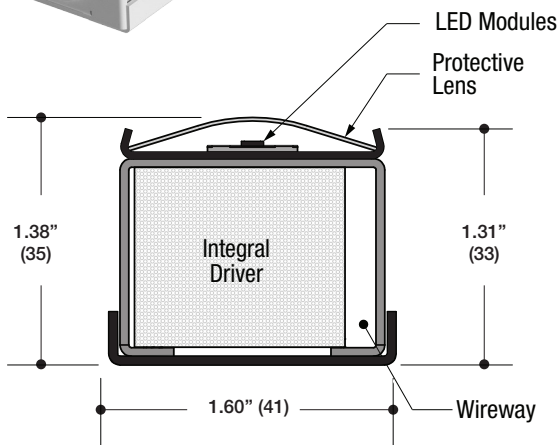
Cat #	EF208D	Large Cylindrical LED spotlight for EF200 with variable adjustment
LED	35C 41C 55C	35W LED 2970 lm nom. 41W LED 3350 lm nom. 55W LED 4563 lm nom.
CRI / Color	8027 8030 8035 8040 8050 9527 9530 9535 9540 9550	80CRI / 2700K 80CRI / 3000K 80CRI / 3500K 80CRI / 4000K 80CRI / 5000K 95CRI / 2700K 95CRI / 3000K 95CRI / 3500K 95CRI / 4000K 95CRI / 5000K
Beam	N M W V	Narrow 15° Medium 27° Wide 42° Very Wide 58°
Power Supply	D1 D2	Phase Dimming 0-10V Dimming Driver
Voltage	1 U	120V (D1 only) 120-277V (D2 only)
Finish	BB WW XX	Matte Black Matte White Custom Color
Example # EF208D-35C-8030-N-D1-1-BB		

Features

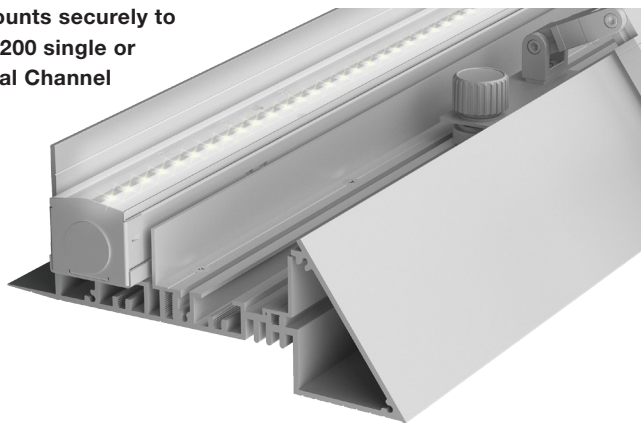
- 4.60" diameter cylinder
- Four-point arm articulation - Friction lock
- 90° x 90° head rotation - Friction lock
- Die-cast aluminum optical housing
- Field-replaceable integral LED module
- Field-changeable optic
- Easy access via front ring snap-in catch action
- Dimmable
- Field-replaceable LED driver
- Snap in, twist-lock mounting
- Suitable for damp location



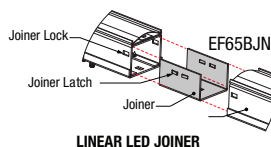
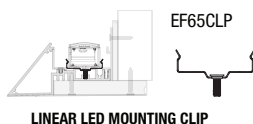
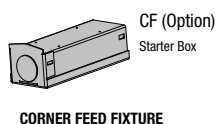
EF200 Linear Light Units



Mounts securely to
EF200 single or
dual Channel



The EF200 System may be specified with LED linear lighting units for continuous ambient lighting inside a cove or other hidden areas. LF offers many options of continuous linear lighting to meet the designer's needs.



Linear LED Unit

EF650

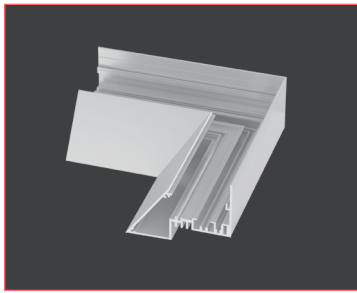
Cat #	EF65B	EF200 Linear LED light module
LED	04F 08F 12F	4W/440lm/ft LED 8W/840lm/ft LED 12W/1200lm/ft LED
CRI	80 90	80 CRI 90 CRI
CCT	27 30 35 40	2700K 3000K 3500K 4000K (90CRI version Consult Factory)
Lens	PL	Protective Lens
Power Supply	D2 D3 D4 E4 D8	*0-10V Dimming Lutron HiLume 1% (120V only) *Lutron HiLume 1% EcoSystem™ & 3-Wire *Dimmable Lutron Hi-lume™ 1% EcoSystem™ *Dimmable DALI 1%
		* 120V - 277V only
Length	018 024 036 048 060 072 096	18" length 24" length 36" length 48" length 60" length 72" length 96" length
Voltage	1 U	120V (D3 only) 120-277V Universal
Finish	WW	Matte White
Options	CF	Corner feed fixture
Example #		EF65B-04F-8027-PL-D3-36-1-WW

Features

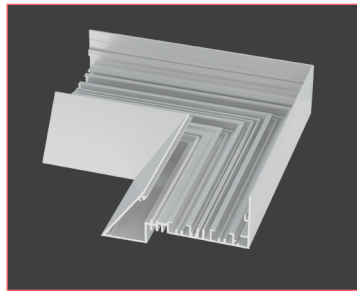
- Metal housing with protective lens
- Powder coat finish
- Available at three power levels to 1200 lumens per foot
- Tight binning ensures color consistency within 2 MacAdam ellipses
- Dense pitch for uniform output
- Symmetric distribution / protective lens
- Field-replaceable integral LED driver
- Integral wiring compartment in housing
- Integral thermal protection
- Quick disconnect through wiring for continuous runs



EF200 System Channel Accessories



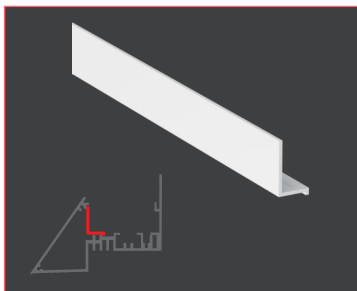
EFK2-190N - 90° (2-leg) corner



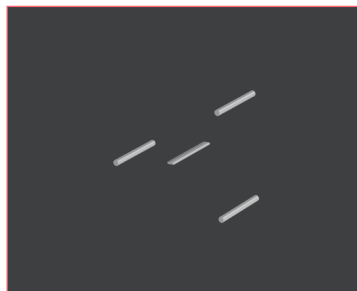
EFK2-290N - 90° (2-leg) corner

EF200 Corner Modules

Channel	EFK2	EF200 Single Slot Channel
Accessory	1L90N 1L90U 2L90N 2L90U	90° inside corner - single slot 90° outside corner - single slot 90° inside corner - dual slot 90° outside corner - dual slot
Finish	BB WW XX	Black powder coat White powder coat Custom finish
Example # EFK2-1L90N-WW		



EFXSH- 8' Channel shield



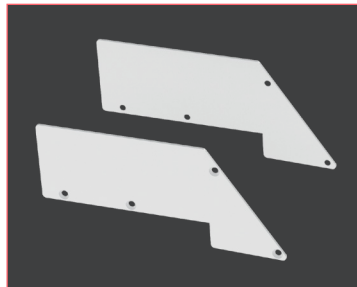
EFXJN - Joiner kit

Channel Accessories

Accessory	EFXSH-096	8' Channel shield - no finish
	EFXJN	Channel joiner kit - no finish
Example # EFXSH-096		



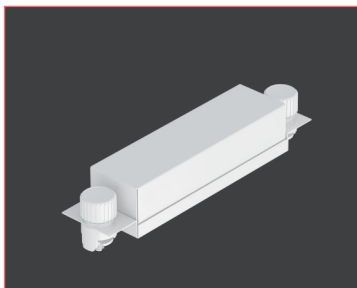
EFK21C - End cap set



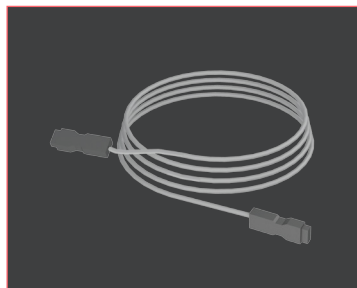
EFK22C - End cap set

End Caps

Cat #	EFK21C EFK22C	EF200 Single channel end cap set EF200 Dual channel end cap set
Color	BB WW XX	Black powder coat White powder coat Custom finish
Example # EFK21C-WW		



FD - Power starter feed

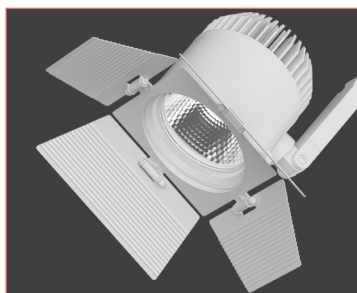


JW048 - 48" jumper wire

Power Feed Accessories

Cat #	EFX	EF400 equipment trough section
Type	FD JW024 JW048	Power Starter Feed/Box (7A) 5-Wire Capable 24" Long, 5-Wire Capable (EFX only) 48" Long, 5-Wire Capable (EFX only)
Color	BB WW	Black powder coat White powder coat
Example # EFX-FD-WW		

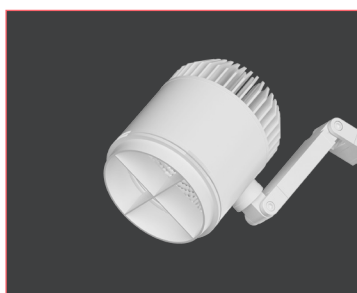
EF200 System Optical Accessories



Barndoor

Barn Door

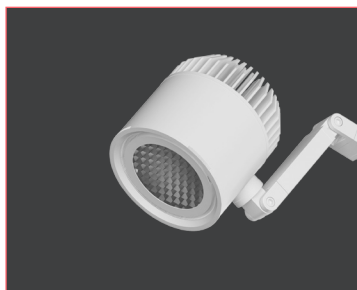
Cat #	OPT	Optical accessory
Size	EF208B EF208C EF208D	Small Medium Large
Type	BD	Barn Door
Finish	BB WW	Black powder coat White powder coat
Example # OPT-EF208B-BDWW		



Cross Baffle

Cross Baffle

Cat #	OPT	Optical accessory
Size	EF208B EF208C EF208D	Small Medium Large
Type	CB	Cross Baffle
Finish	BB WW	Black powder coat White powder coat
Example # OPT-EF208B-CBWW		



Hex Louver

Hex Louver

Cat #	OPT	Optical accessory
Size	EF208B EF208C EF208D	Small Medium Large
Type	HXL	Hex Louver
Finish	BB	Black powder coat
Example # OPT-EF208B-HXLWW		



Wall Wash

Wall Wash

Cat #	OPT	Optical accessory
Size	EF208B EF208C EF208D	Small Medium Large
Type	WW	Wall Wash
Finish	BB WW	Black powder coat White powder coat
Example # OPT-EF208B-WWWW		

Note: Other optical accessories such as lenses, louvers and filters are available. Consult www.lfilluminatiion.com for full specs and ordering info.

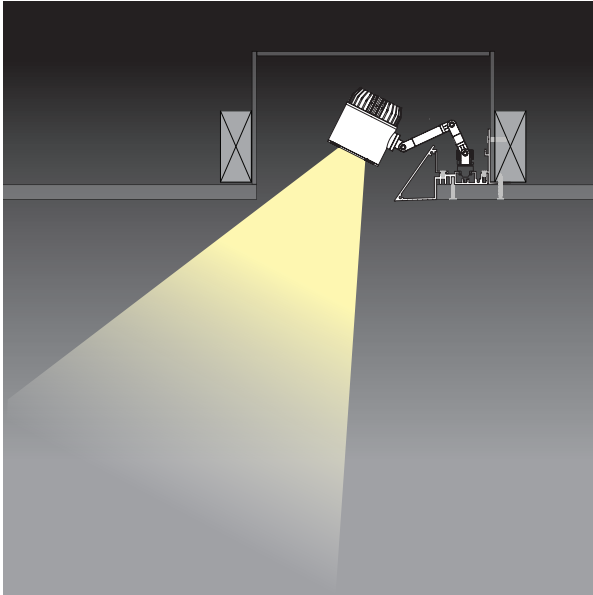




EF200

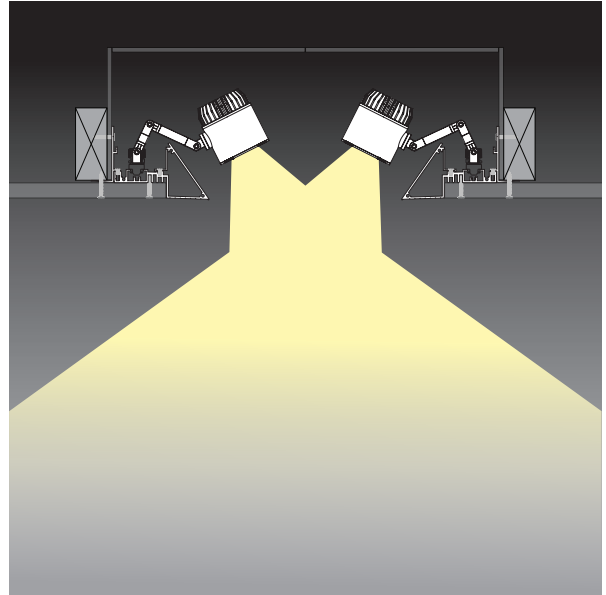
Optional Available Slot Configurations

Single Channel Recessed Slot



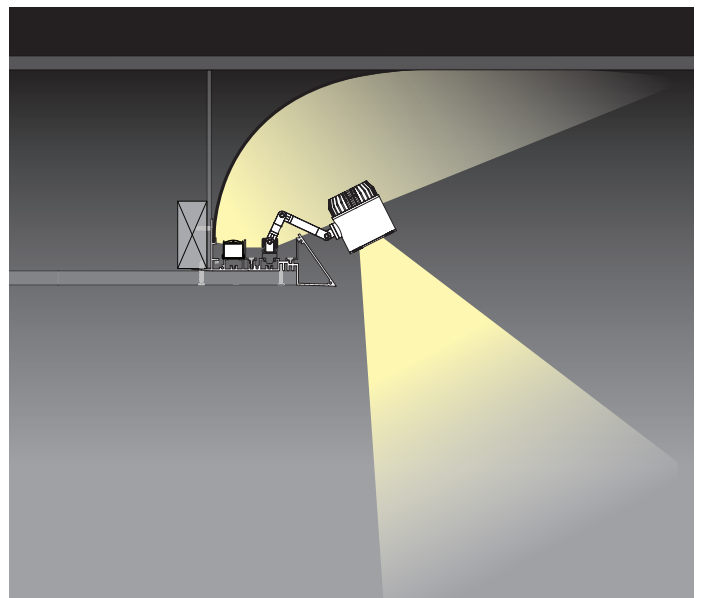
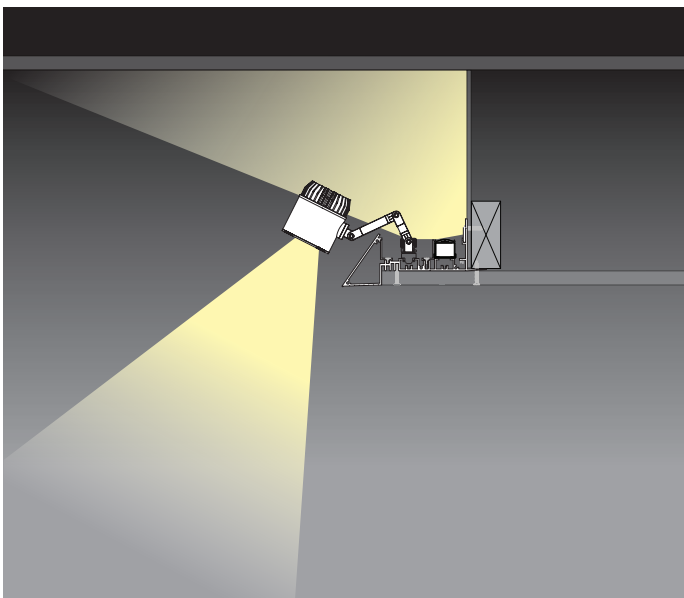
Single Channel with accent light units.

Dual Channel Recessed Slot



Opposing Single Channel lengths with accent light units.

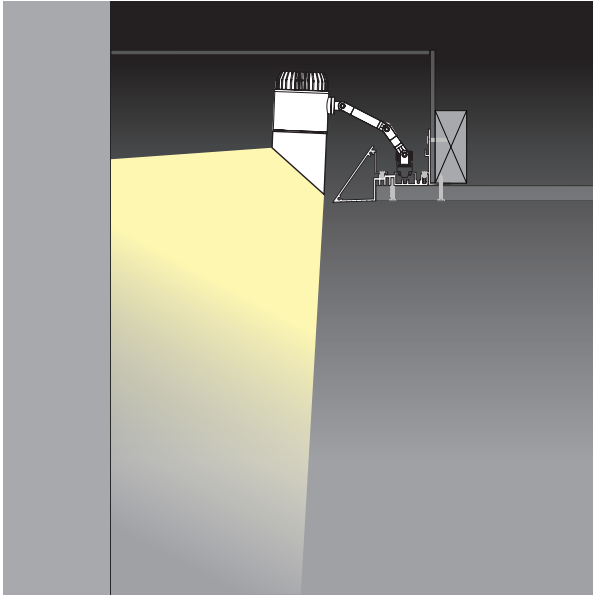
Floating Ceiling Perimeter Lighting



Dual Channel installation around the perimeter of a floating ceiling build-out. Accent light units are used in combination with linear LED cove lighting. LED cove lighting may also be used alone in a single channel installation. The image on the right shows a rounded cove corner.

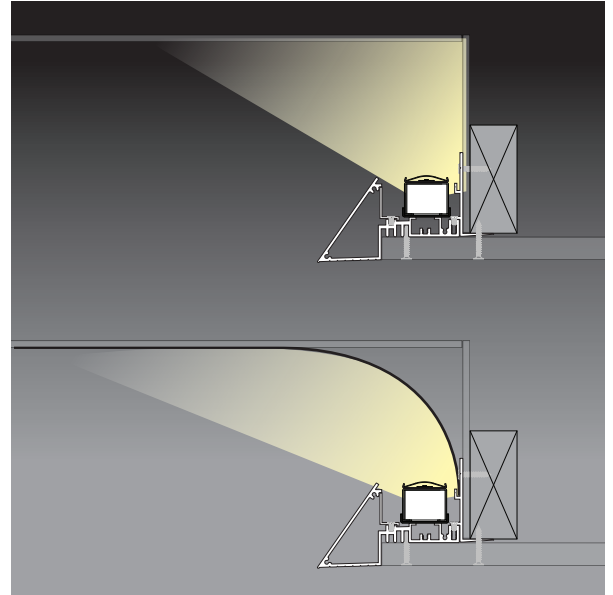
Optional Available Slot Configurations

Recessed Wall Wash / Grazer



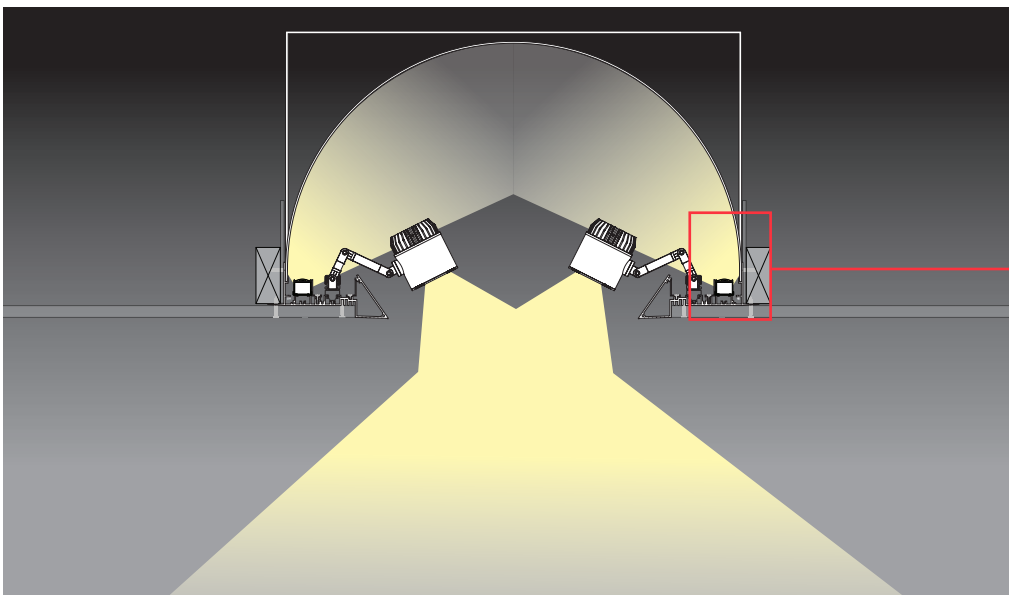
Single Channel lengths with accent light units used for illuminating vertical surfaces. Wall Wash accessory provides a secondary reflector for efficient vertical illumination.

Linear Cove Lighting

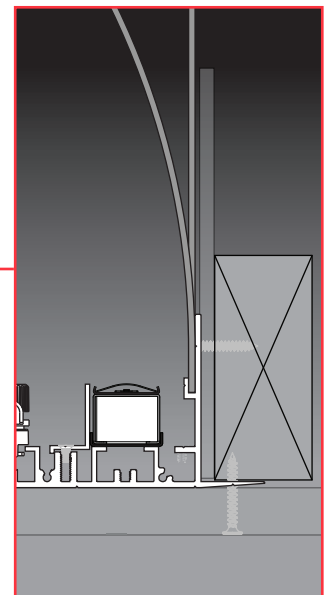


Single Channel lengths shown with ambient source only in either a straight or curved cove.

Dual Channel Recessed Slot with Curved Interior and Linear Uplighting



Opposing Dual Channel slot installation. A curved sheet metal slot interior has been fabricated to easily attach to the slots on the channel side walls. Accent light units are used in combination with linear LED cove lighting.



Consult the factory for custom fabrication of curved cove interior or other options.



Coca-Cola Store - Disney Springs, Orlando, FL



Yes, we can do curves.

The EF200 System channel can be configured to accommodate any number of straight continuous runs. Using the 90° return modules opens up even more possibilities for the designer such as enclosed rectangles.

Taking it a step further, we are able to custom form the channel to a specified radius. This makes it possible to create stunning organic curved cove shapes or large ellipses. Please consult the LF Illumination factory for details on how to specify EF200 to meet the needs of your next project.







©2017 LF ILLUMINATION LLC

We reserve the right to change or withdraw specifications without prior notice.

HEADQUARTERS
9200 Deering Avenue
Chatsworth CA 91311

Telephone: 818-885-1335
Toll Free: 855-885-1335
Fax: 818-576-1335

www.lfillumination.com