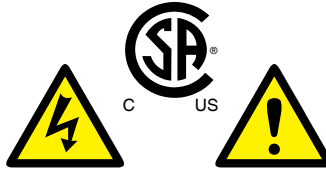


Warnings:

- * Risk of fire or electric shock.
- * **Disconnect all power before installing or servicing.**
- * Installation Instructions for qualified electricians only.
- * Install per National Electrical Code and local regulations.
- * Read Installation Instructions completely before installation.
- * Failure to follow Installation Instructions may void warranties.



THIS PRODUCT MUST BE INSTALLED IN ACCORDANCE WITH THE APPLICABLE INSTALLATION CODE BY A PERSON FAMILIAR WITH THE CONSTRUCTION AND OPERATION OF THE PRODUCT AND THE HAZARDS INVOLVED.

FIXTURE MOUNTING:

1. Carefully remove (un-snap) lens, bottom reflector with linear LED module to gain access to the power supply line and locking stem nut (*See Figure 1*).
2. Pull the power supply line through stem. Screw stem into housing and secure with locking stem nut at housing.
3. Re-assemble bottom reflector with linear LED and carefully snap lens back in place.
4. At the top of the stem, feed power supply line through canopy bracket assembly and make the necessary electrical connections at the ceiling junction box. Screw stem into canopy assembly (*See Page 2*).
5. Fasten canopy over assembly to finish (*See Figure 2*).

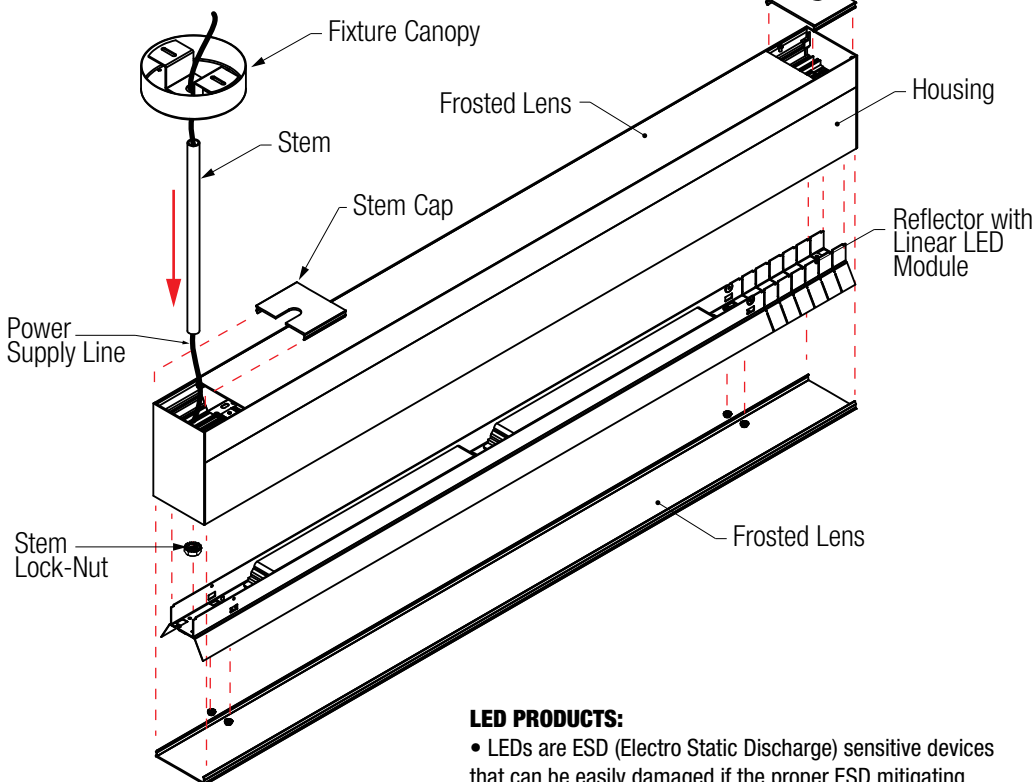


FIGURE 1

LED PRODUCTS:

- LEDs are ESD (Electro Static Discharge) sensitive devices that can be easily damaged if the proper ESD mitigating steps are not taken.
 - LEDs are very sensitive to mechanical damage.
- CAUTION MUST BE TAKEN TO AVOID DAMAGE TO THE LEDs.
- ESD or mechanical damage voids all warranties.

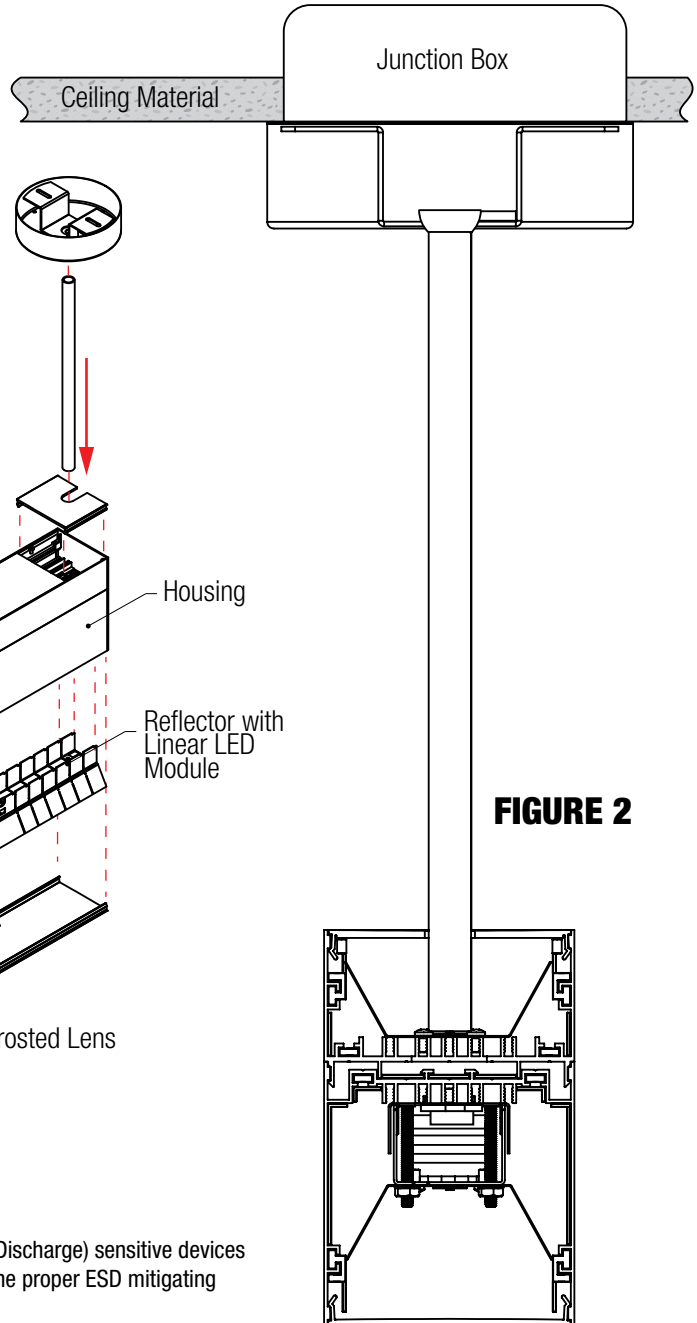


FIGURE 2

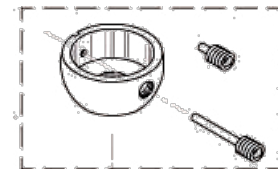


35 ADJ

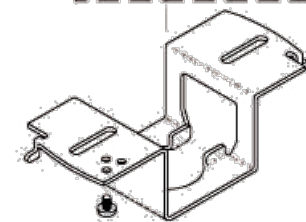


ADJ -SS

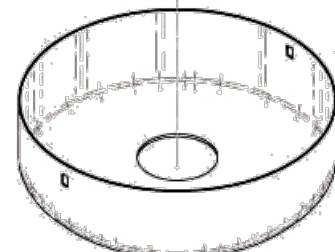
1- Cut stem to desired length and deburr inside edge. Insert ADJ Casting onto the stem with the edge of the cut even with the back of the casting and insert ADJ -SS screw (short one) and tighten the set screw in the casting to the stem.



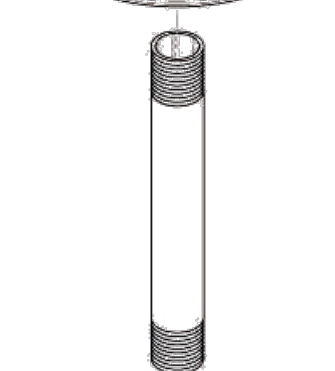
2- Drill a 1/8" Hole thru the hole on the casting opposite the set screw. ALWAYS USE EYE PROTECTION.



3- Loosen set screw in casting and rotate 180 degrees placing set screw centered on drilled 1/8" hole. Tighten screw allowing screw to be centered on hole. You should see pin on inside of tube when set correctly.



4- Drill a 2nd 1/8" Hole thru the hole on the casting opposite the set screw. Deburr any sharp edges on ID of stem from drilling holes.



5- Remove short set screw on casting and insert SSS (Socket Set Screw -Long One) into tapped hole thru the drilled hole in stem and thru to other side of stem. Tighten set screw using Allen wrench so pin engages thru opposite 1/8" drilled hole on opposite side of stem and into casting.

